

# *Service Letter*

## **Service Letter No. 425 February, 1995**

**SUBJECT: New Auto-Lash® Assemblies**

**MODELS AFFECTED: 440, 440A, 450A and 450B**

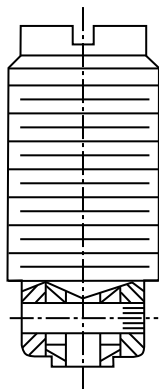
New Auto-Lash Adjusting Screw Assemblies for Cummins engines will be used in Models 440, 440A, 450A and 450B engine brake housing assemblies, and will be available as service parts as noted below:

| <b>Engine Model</b> | <b>Existing Auto-Lash Part Number</b> | <b>New Auto-Lash Part Number</b> | <b>Color Code</b> | <b>Effectivity Date</b> |
|---------------------|---------------------------------------|----------------------------------|-------------------|-------------------------|
| 440                 | 017932                                | 020509                           | White             | Immediately             |
| 440A                | 018014                                | 020205                           | Blue              | February 28, 1995       |
| 450A*               | 019406                                | 020449*                          | Yellow            | February 28, 1995       |
| 450B                | 018797                                | 020511                           | Red               | February 28, 1995       |

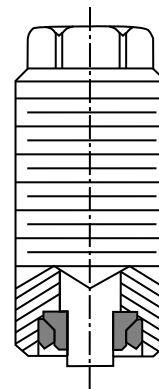
\* Please note: There may be some discontinued Auto-Lash assemblies (P/N 009329) in the field for the Model 400 Jake Brake which are also color-coded yellow. Please verify the part number prior to installation.

The new Auto-Lash Adjusting Screw Assemblies for Cummins engines (P/N 020205, 020449, 020509 and 020511) have a hex head instead of a slotted head as shown below. This change will allow the lash adjustment to be made by either a dial indicator or a feeler gage (see the installation manual for proper lash adjustment settings). In addition, the crosspin on all the assemblies has been removed and replaced by a pressed sleeve. These parts are interchangeable and both styles can be used in a Jacobs engine brake housing assembly.

This is a Jacobs product improvement and not subject to campaign.



**Existing Style**



**New Style**

**P/Ns 020205, 020449, 020509, 020511**