



HIGHWAY AFTERMARKET

PARTS CATALOG

#BadhoBefikar

CUMMINS ONHIGHWAY AFTERMARKET PORTFOLIO



Turbo Charger



Filters



Engine Parts



Clutches



Coolants



Air Shield DEF



Automotive Batteries



Long Block



Brake Lining



Fuel Sure Kit



**Bano SMART
Badho Befikar**

MITWA
Genuine Cummins Parts Ka Saathi

SCAN PRODUCT QR CODE AND EARN INSTANT REWARD POINTS

MITWA Mechanic Loyalty Program brings to you the **MITWA QR code-based redemption** - the most advanced contactless process to earn instant cash* and identify Genuine Cummins Parts.

Now, say goodbye to all your manual and time-consuming processes.

MRP Label

Manufactured and packed by:

Part Number: 438432
ACCUMULATOR
Net Qty: 10

MRP No. 14985.00
Excludes all taxes

Month and Year of Mfg: DECEMBER 2022

Explore **SMART** - the benefits of MITWA QR code-based redemption

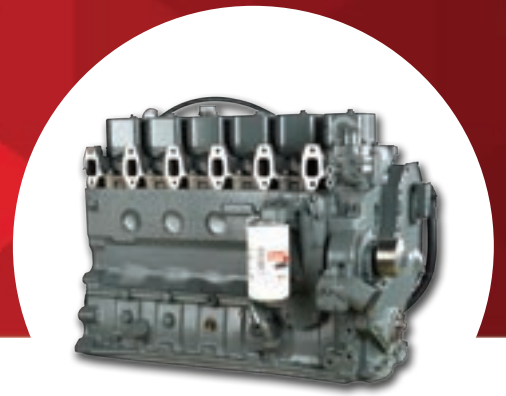
- S**can and earn reward points.
- M**anage all your scan history in one place.
- A**ssurance of Genuine Cummins Parts.
- R**edeem instant cash* anytime with ease.
- T**ransparent and secure process.



Table of contents

	Page No.
1. Long Block	2
2. Cylinder Block	4
3. Camshaft And Crankshaft	5
4. Cylinder Head	7
5. Kits - Overhaul	9
6. Piston Rings	14
7. Sleeves/Liner	16
8. Bearings, Seals And Bush	17
9. Gear And Drive	22
10. Push Rod	23
11. Gasket	25
12. Running Parts - Oil Pump, Water Pump, V Belt	31
13. Seal O Ring	47
14. Dipstick And Tube Oil Gauge	48
15. Dummy	50
16. Hoses And Pipes	52
17. Nozzle Pipes	59
18. Tube, Injector Fuel Supply- ISBe6.7 BSIII AND BSIV	60
19. Tube, Injector Fuel Supply-ISBe5.9 BSIV UMBRELLA	62
20. Clutch, Fan And Assembly	66
21. Alternator And Air Compressor	69
22. Clutch Application and Flywheel (Rings and Housing)	70
23. Flywheel, Ring And Housing	75
24. Fastners - Bolts, Screws and Clamps	78
25. Wiring Harness	91
26. Electronic Fuel Pump	93
27. Electronic Injector	94
28. Common Rail	95
29. Starter Motor	96
30. Electronic Sensors	97
31. Basic Overhaul Kit	99
32. KIT- Upper And Lower Engine Gasket	100
33. Long Block With Front Sump Oil	101
34. 4BT Engine Parts	102
35. Turbocharger	103
36. Components Parts	105
37. Technical Sheets - FABs	

LONG BLOCK



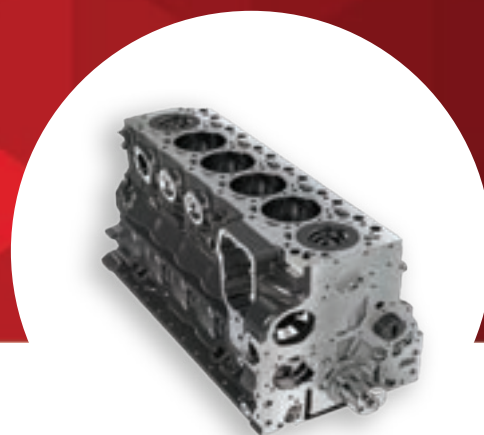
PART NUMBER	OEM REFERENCE	DESCRIPTION	EMISSION
AX1006604	278601990117	LONG BLOCK 6BT5.9L VP14 FUEL SYSTEM 125-180 HP	BSII
AX1012947	NA	LONG BLOCK 6BT5.9L INDUSTRIAL	STAGE 2
AX1013844	278601990194	LONG BLOCK 6BT5.9L VP14 FUEL SYSTEM 180 HP	BSIII
AX1013369	278601990117	LONG BLOCK 6BT5.9L 180 HP AMW	BSII
AX1013393	278601990128	LONG BLOCK 6BT5.9L 180 HP AMW	BSIII
AX1012945	NA	LONG BLOCK 4BT3.9L CONSTUCTION (EXCAVATOR- JS140)	STAGE 2
AX1015527	278601010209	ENGINE 6BT5.9L 160 HP 12V-LMFO	BSII
AX1015526	278601010398	ENGINE 6BT5.9L 180 HP 24V LMRO	BSIII
AX1015423	278601990355	LONG BLOCK ISBe 5.9L SCR CUMMINS FUEL SYSTEM (UMBRELLA)	BSIV

LONG BLOCK



PART NUMBER	OEM REFERENCE	DESCRIPTION	EMISSION
AX1015422	278601990310	LONG BLOCK ISBe5.9L BOSCH FUEL SYSTEM (AJINKYA)	BSIV
AX1013889	NA	LONG BLOCK 4BTA	STAGE III
AX1014556	NA	LONG BLOCK 6CTA 8.3L CONSTRUCTION	BSIII
AX1001399	NA	LONG BLOCK 160 HP INLINE 6BT (160 KVA)	BSI
AX1014556	NA	LONG BLOCK 6CTA 8.3L (COMPRESSOR)	CONSTRUCTION
AX1015421	278601990318	LONG BLOCK 5.9L (UMBRELLA) FOR TC (LPO1515 LPA713 SA1212 & LPA715)	BSIV
AX1015423	278601990355	LONG BLOCK 5.9L (UMBRELLA) FOR TC (2523 TO 5523)	BSIV
AX1014571	278601990313	LONG BLOCK 5.9L 230 HP (AJINKYA) FOR TC (1615 TO 5523)	BSIV
AX1015417	570101990107	LONG BLOCK 6.7 PRIMA TC (2525 TO 4930)	BSIV

CYLINDER BLOCK



PART NUMBER	OEM REFERENCE	DESCRIPTION	EMISSION
3936600	278601990110	CYLINDER BLOCK 6BTA5.9L	BSII BSIII
5302096	278601993706	CYLINDER BLOCK ISBe6.7L SCR	BSIII BSIV BSVI
5333388	278601990222	CYLINDER BLOCK ISBe5.9L SCR	BSIII BSIV
5402873	278601990319	CYLINDER BLOCK ISBe5.9L EGR	BSIV
4093818	NA	CYLINDER BLOCK 4BT 3.9L	STAGE II STAGE III
5481562	573701990102	CYLINDER BLOCK ISBe5.6L ASHWAMEDHA	BSVI
3939313	220001153701	CYLINDER BLOCK 6CTA 8.3L	BSIII
3935266	278601999939	CONNECTOR MALE(HEAD)	BSII
5312196	278620999823	ADAPTER ENGINE VENT ISBe5.9L	BSIV

CAMSHAFT & CRANKSHAFT



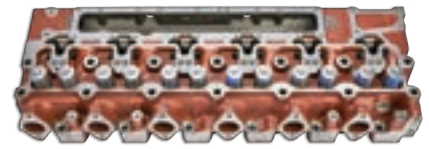
PART NUMBER	OEM REFERENCE	DESCRIPTION	EMISSION
3923478	220015107901	CAMSHAFT 6CTA 8.3L	BSIII
3918986	278603990172	CRANKSHAFT 6CTA 8.3L	BSIII
3908031	NA	CRANKSHAFT WITH GEAR AND PIN 4BT	STAGE II
3929036	NA	CRANKSHAFT WITHOUT GEAR 4BT	STAGE II
5482833	278603990246	CRANKSHAFT WITHOUT GEAR (4 HOLES WITHOUT PIN)	BSII BSIII BSIV
5301009	570103990142	CRANKSHAFT ISBe6.7L PRIMA WITHOUT GEAR (6 HOLES)	BSIV BSVI
5530430	278603999845	CRANKSHAFT ISBe5.9L UMBRELLA WITHOUT GEAR (5 HOLES)	BSIV
5477882	573703999801	CRANKSHAFT ISBe5.6L ASHWAMEDHA (5 HOLES)	BSVI
5316942	278603990192	CRANKSHAFT ISBe5.9L AJINKYA (4 HOLES) WITH PIN	BSIII BSIV
3936612	2786051995901	CRANKSHAFT KEY	Common

CAMSHAFT & CRANKSHAFT



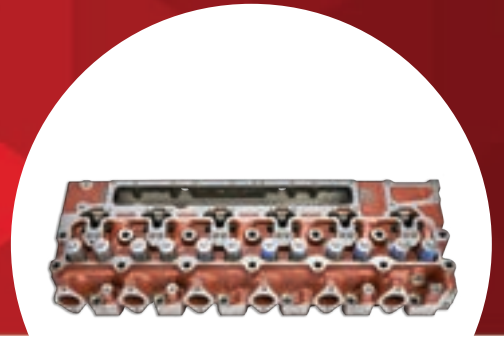
PART NUMBER	OEM REFERENCE	DESCRIPTION	EMISSION
5623176	573705999813	CAMSHAFT ISBe5.6L ASHWAMEDHA	BSVI
3283179	278605999958	CAMSHAFT 6BT	BSII
4094069	278605999977	CAMSHAFT ISBe5.9L	BSIII BSIV
3979506	570105990104	CAMSHAFT PRIMA ISBe6.7L	BSIII BSIV
5404613	278605999824	CAMSHAFT ISBe5.9L UMBRELLA	BSIV
3929885	NA	CAMSHAFT 4BTA 3.9 L	STAGE II
3929039	278605997904	CAMSHAFT 4BT 3.9L	STAGE III

CYLINDER HEAD



PART NUMBER	OEM REFERENCE	DESCRIPTION	EMISSION
5586608	570101990226	CYLINDER HEAD COMPLETE ISBe6.7L	BSIII BSIV BSVI
5566254	573701990142	CYLINDER HEAD COMPLETE ISBe5.6L ASHWAMEDHA	BSVI
3927282	278601990112	CYLINDER HEAD COMPLETE WITH 12 VALVES 6BTA	BSII
3966454	278601993707	CYLINDER HEAD WITHOUT VALVES 6BTA	BSII
5361587	278601990302	CYLINDER HEAD COMPLETE WITH 24 VALVES 6BTA5.9L	BSIII
5397436	570101990150	CYLINDER HEAD WITH 24 VALVES ISBe6.7L	BSIII BSIV
5361630	278601990290	CYLINDER HEAD WITH 24 VALVES ISBe5.9L (PRIMA LX_OLD MODEL)	BSIII
5303984	278601990235	CYLINDER HEAD WITHOUT VALVE ISBe5.9L (UMBRELLA, AJINKYA)	BSIV
5363644	278601990305	CYLINDER HEAD WITH VALVE ISBe5.9L (UMBRELLA , AJINKYA)	BSIV

CYLINDER HEAD



PART NUMBER	OEM REFERENCE	DESCRIPTION	EMISSION
3904483	278603999906	DOWEL PIN (CRANK SHAFT KEY)	COMMON
3902343	278601999908	DOWEL,RING	COMMON
3900068	278601999914	HEAD DOWEL RING (BIG HOLE)	COMMON

KITS – OVERHAUL



PART NUMBER	OEM REFERENCE	DESCRIPTION	EMISSION
KIT3238129	885403013516	BLOCK OVERHAUL KIT (WITHOUT LINER) WITH CONNECTING ROD, BUSH AND BEARINGS	BSII
KIT3238222	NA	BLOCK OVERHAUL KIT WITH LINER, CONNECTING ROD, BUSH AND BEARINGS	BSII
KIT3238099	885403013118	BLOCK OVERHAUL KIT STANDARD (WITHOUT LINER)	BSIII
KIT3238224	885403021618	BLOCK OVERHAUL KIT STANDARD (WITH LINER)	BSIII
3238405	NA	BASIC OVERHAUL KIT ISBe 5.9 AJINKYA WITH PISTON, RING, LINER, UPPER AND LOWER GASKET	BSIV
3238404	NA	BASIC OVERHAUL KIT ISBe 5.9 UMBRELLA (PISTON, RING, UPPER AND LOWER GASKET)	BSIV
3238407	NA	BASIC OVERHAUL KIT (PISTON, RING, UPPER AND LOWER GASKET)	BSIII

KITS – OVERHAUL



PART NUMBER	OEM REFERENCE	DESCRIPTION	EMISSION
3238408	NA	BASIC OVERHAUL KIT (PISTON, RING, UPPER AND LOWER GASKET)	BSII
3238387	NA	KIT COLLET VALVE LOCK CHILD PART:3900250 QTY:24 (6BTA)	BSII
3238388	NA	KIT COLLET VALVE LOCK CHILD PART: 3940123 QTY:48 (6BTA)	BSIII BSIV BSVI
3238390	NA	VALVE KIT STD (INTAKE AND EXHAUST)	BSIII BSIV BSVI
3238389	NA	VALVE KIT STD (INTAKE AND EXHAUST)	BSII
3940735	278605999969	VALVE INTAKE	BSII BSIII BSIV
3940734	570105999001	VALVE EXHAUST	BSII BSIII BSIV
3802085	NA	VALVE EXHAUST 6CTA 8.3L	BSIII
3924492	NA	VALVE INTAKE 6CTA 8.3L	BSIII

KITS – OVERHAUL



PART NUMBER	OEM REFERENCE	DESCRIPTION	EMISSION
5294688	278605999002	KIT 12 VALVES AND 24 COLLETS STANDARD	BSII
KIT5303723	NA	VALVE SET - 003 WITH COLLET 6BT-OVERSIZE -1	BSII
KIT3238095	NA	VALVE SET -005 WITH COLLET 6BT-OVERSIZE-2	BSII
KIT3238221	NA	CYLINDER HEAD OVERHAUL KIT 6BT STANDARD	BSII
KIT5294689	NA	VALVE KIT STD 24 VALVES AND 48 COLLETS	BSIII BSIV
KIT5303724	NA	VALVE SET -003 WITH COLLETS 6BT-OVERSIZE-1	BSIII BSIV
KIT3238097	NA	VALVE SET -005 WITH COLLET 6BT-OVERSIZE-2	BSIII BSIV
KIT4093678	27860399997	PISTON WITH PIN TC STANDARD	BSII

KITS – OVERHAUL



PART NUMBER	OEM REFERENCE	DESCRIPTION	EMISSION
5563308 KIT	570103990176	PISTON KIT WITH PIN ISBe6.7L ATULYA	BSVI
5361506	NA	PISTON INDUSTRIAL ISBe 6.7L (SINGLE PISTON)	NA
5291987	278603999806	PISTON,ENGINE (SINGLE PISTON)	BSIII

PISTON RING



PART NUMBER	OEM REFERENCE	DESCRIPTION	EMISSION
3802421	886309000017	PISTON RING STANDARD TC	BSII
3802422	278603999978	PISTON RING 20/0.5	BSII
3802423	278603999979	PISTON RING 40 /1	BSII
5292547	278603990153	PISTON RING SET STANDARD	BSIII
5292548	278603990154	PISTON RING SET 020 /0.5	BSIII
5476713	278603990244	PISTON RING SET (UMBRELLA SCR) ISBe5.9L	BSIV
5257640	570103990101	PISTON RING SET STANDARD (PRIMA) ISBe6.7L	BSIII BSIV
5563305	573703990113	PISTON RING SET ISBe5.6L ASHWAMEDHA	BSVI
5563307	570103990175	PISTON RING SET ISBe6.7L ATULYA	BSVI
4955251	NA	SET PISTON RING SET ISBe 6.7L PRIMA STD (HEAVY QUALITY)	INDUSTRIAL

PISTON RING



PART NUMBER	OEM REFERENCE	DESCRIPTION	EMISSION
3238401	PR -KIT	KIT PISTON AND RING CHILD PART: PISTON- 5292544 (6 NO'S) RING- 5292547 (1 SET)	BSIII
3238400	PR -KIT	KIT PISTON AND RING CHILD PART: PISTON- 4093678 (6 NO'S) RING- 380242(1 SET)	BSII
3238365	PR -KIT	PISTON AND RING KIT ISBe5.9L AJINKYA	BSIV
3238364	PR -KIT	PISTON AND RING KIT ISBe 5.9L UMBRELLA SCR	BSIV

SLEEVE/LINER



PART NUMBER	OEM REFERENCE	DESCRIPTION	EMISSION
3238475	PR -KIT	PISTON AND RING KIT	BSIII
4094029	278601989929	PISTON SLEEVE/LINER (102 BORE) ISBe5.9L	BSII BSIII BSIV
4919951	570101999926	PISTON SLEEVE/LINER (107 BORE) ISBe6.7L	BSIII BSIV BSVI
5628914 5628915 5628916 5628917	NA	SINGLE PACKING 6BT 5.9 5628914 10 THOU 5628915 20 THOU 5628916 30 THOU 5628917 40 THOU (WITH COLLAR)	BSII BSIII BSIV
3238391 3238392 3238393 3238394	NA	KIT SLEEVE 6 NO.S 3238391 KIT 10 THOU 3238392 KIT 20 THOU 3238393 KIT 30 THOU 3238394 KIT 40 THOU	BSII BSIII BSIV

BEARINGS, SEALS AND BUSH



PART NUMBER	OEM REFERENCE	DESCRIPTION	EMISSION
4988952	278603997702	MAIN BEARING OILSEAL 6BT &AND 4BT	BSII BSIII BSIV INDUSTRIAL
3926126	278603999908	REAR SEAL WEAR SLEEVE KIT	BSII BSIII BSIV INDUSTRIAL
5527066	278618997704	TIMING OIL SEAL (SUPERSEDED PART NO. 4359961) 6BT AND 4BT	BSII BSIII BSIV INDUSTRIAL
5338295 4890832	278618997707	SEAL OIL ISBe6.7L	BSIII BSIV BSVI
3957912	278605999959	VALVE OIL SEAL (SET OF 12 Pcs.)	BSII
3955393	278605999974	VALVE OIL SEAL (SET OF 24 Pcs)	BSIII
3927155	278605999912	CAMSHAFT THRUST SUPPORT(LOCK)	BSII BSIII BSIV

BEARINGS, SEALS AND BUSH



PART NUMBER	OEM REFERENCE	DESCRIPTION	EMISSION
5313863	278605999820	CAMSHAFT THRUST SUPPORT ISBe6.7L (LOCK)	BSIV
5303135	278601999902	CAM BUSH TC STD	BSII BSIII BSIV
5686633	573701993401	CAM BUSH TC STD ISBe6.7L PRIMA (Old : 4983253 570101993401)	BSIII BSIV BSVI
4891178	278615999923	CON ROD BUSH STD	BSII BSIII BSIV
3238093 KIT	278603993401	CON ROD BUSH KIT TC STD (6) NOS	BSII BSIII BSIV
5257363	570103993401	CON ROD BUSH STD PRIMA	BSIV BSVI
4955352	573703990115	MAIN BEARING SET STD ISBe5.6L ASHWAMEDHA	BSVI
3945917	220003123101	MAIN BEARING SET 6CTA 8.3L	BSIII

BEARINGS, SEALS AND BUSH



PART NUMBER	OEM REFERENCE	DESCRIPTION	EMISSION
5711267	570103990184	MAIN BEARING SETTC STANDARD PRIMA ISBe6.7L (Old: 4955521-570103990109)	BSIII BSIV
5303128 5303129	278603993147 278603993148	MAIN BEARING ISBe5.9L	BSIII BSIV
5303130	278603993149	THRUST BEARINGNG IS- Be5.9L	BSIII BSIV
5335357	278601999801	KIT MAIN BEARING TC STD	BSII BSIII BSIV
4080708	278601999802	KIT MAIN BEARING TC 010	BSII BSIII BSIV
3802072	278603990106	KIT MAIN BEARING TC 020	BSII BSIII BSIV
3802073	278603990107	KIT MAIN BEARING TC 030	BSII BSIII BSIV
3802074	278603990108	KIT MAIN BEARING TC 040	BSII BSIII BSIV

BEARINGS, SEALS AND BUSH



PART NUMBER	OEM REFERENCE	DESCRIPTION	EMISSION
4893693	570103993101	CON ROD BEARING ISBe6.7L	BSIII BSIV
3969562	278603993112	CON ROD BEARING ISBe5.9L	BSIII BSIV
4080702	278603999980	CON ROD BEARING STANDARD	BSII
4080703	278613999904	CON ROD BEARING 010(0.25)	BSII
4080704	278613999903	CON ROD BEARING 020(0.50)	BSII
4080705	278613999902	CON ROD BEARING TC 030(0.75)	BSII
4080706	278613999901	CON ROD BEARING TC 040(1.0)	BSII
5313639	278603990176	KIT CON ROD BEARING TC STD	BSIII
5316383	278603990182	KIT CON ROD BEARING KIT TC10 (0.25)	BSIII

BEARINGS, SEALS AND BUSH



PART NUMBER	OEM REFERENCE	DESCRIPTION	EMISSION
5316384	278603990183	KIT CON ROD BEARING TC20 (0.50)	BSIII
5316385	278603990184	KIT CON ROD BEARING TC30(0.75)	BSIII
4943979	278603990175	CON- ROD TC	BSII BSIII BSIV

GEAR AND DRIVE



PART NUMBER	OEM REFERENCE	DESCRIPTION	EMISSION
3929027	278603999905	CRANK GEAR TC ISBe5.9L	BSII BSIII BSIV
3929028	278605999910	CAMSAFT GEAR TC 6BTA	BSII BSIII BSIV
3955152	570105995401	CAMSHAFT GEAR ISBe6.7 (PRIMA)	BSIII BSIV
5447894	278605995403	CAMSHAFT GEAR ISBe5.9L	BSII BSIII BSIV
4932713	278609999945 278607995401	GEAR FUEL PUMP 4BT3.9L AND 6BTA5.9L INDUSTRIAL	BSII BSIII BSIV
3955153	278607995403	GEAR FUEL PUMP ISBe6.7L	BSIII BSIV
3967611	278613995402	GEAR ACCESSORY DRIVE ISBe5.9L	BSIV
3900257	278601999911	GEAR DOWEL PIN (TIMING)	BSII BSIII BSIV

PUSH ROD



PART NUMBER	OEM REFERENCE	DESCRIPTION	EMISSION
3284377	278605999926	PUSH ROD OAL 10.8929 INCH	BSII
3941253	278605999979	PUSH ROD OAL 11.622 INCH	BSIII BSIV
3931623	278605999913	TAPPET VALVE 6BTA5.9L	BSII
3942565	278605999978	TAPPET VALVE ISBe5.9L	BSIII BSIV
3947759	570105999906	TAPPET VALVE ISBe6.7L	BSIII BSIV
3900250	278601999925	COLLET VALVE TC (24 Nos)	BSII
3940123	278605999970	COLLET VALVE TC (48 Nos)	BSIII
3934920	278605999955	ROCKER LEVER TC	BSII
4995602	278605990109	ROCKER LEVER TC ISBe5.9L	BSIII BSIV
5398030 6321782 5709457	278605999829 570105999817 570105999816	ROCKER LEVER ISBe6.7L AND 5.6L REAR STANDARD	BSVI
3910810	278605999921	ROCKER LEVER (BIG)	BSII

VALVE SPRING ROCKER LEVER

PART NUMBER	OEM REFERENCE	DESCRIPTION	EMISSION
3910811	278605999918	ROCKER LEVER (SMALL)	BSII
3916691	278601999912	VALVE SPRING TC(BIG)	BSII
3926700	278601999921	VALVE SPRING TC (SMALL)	BSII
5303406	570105998701	VALVE SPRING TC ISBe5.9L/6.7L	BSIII
3957913	278605999960	RETAINER VALVE SPRING (VALVE CAP)	BSII
5271485	570105999901	RETAINER VALVE SPRING (VALVE CAP) ISBe 5.9L/6.7L	BSIII

GASKETS

PART NUMBER	OEM REFERENCE	DESCRIPTION	EMISSION
3931904	278601999973	SEALANT LIQUID GASKET (PASTE)	COMMON
3283570	886309000015	HEAD GASKET TC	BSII
5303363	278601995304	HEAD GASKET TC	BSIII
5304132	278601995306	HEAD GASKET ISBe5.9L UMBRELLA AND AJINKYA	BSIV
5305340	278601995305	HEAD GASKET ISBe5.9L	BSIII
5529516	220001155301	HEAD GASKET 6CTA 8.3L	BSIII
5482766	573701995302	HEAD GASKET TC ISBe5.6L ASHWAMEDHA	BSVI
5405667	278601995312	EGR - HEAD GASKET ISBe5.9L UMBRELLA	BSIV
4932210	570101995302	HEAD GASKET TC ISBe6.7L	BSIII BSIV BSVI
5476716	278601990315	UPPER GASKET KIT ISBe5.9L (UMBRELLA SCR)	BSIV

GASKETS

PART NUMBER	OEM REFERENCE	DESCRIPTION	EMISSION
5476720	278601990316	LOWER GASKET KIT ISBe5.9L (UMBRELLA SCR)	BSIV
5336843	278601990238	UPPER GASKET KIT ISBe5.9L AJINKYA	BSIV
5336842	278601990237	FULL GASKET (UPPER AND LOWER)ISBe5.9L AJINKYA	BSIV
5316503	278601990227	LOWER GASKET ISBe5.9L AJINKYA	BSIII BSIV
3936562	278620999933	UPPER GASKET TC	BSII
3936563	278601999993	LOWER GASKET TC	BSII
4093904	278605999963	FULL SET GASKET TC WITHOUT OILSEAL AND STEM SEAL	BSII
5258736	278601990197	UPPER GASKET TC	BSIII
5258737	278601990198	LOWER GASKET TC	BSIII
5257635	570101990111	SET UPPER GASKET ISBe6.7 (PRIMA)	BSIV

GASKETS

PART NUMBER	OEM REFERENCE	DESCRIPTION	EMISSION
5257636	570101990112	SET LOWER GASKET ISBe6.7L (PRIMA)	BSIII BSIV
3930906	278605999928	TAPPET COVER GASKET TC (6 PCS SET)	BSII
3935449	278601989903	ISOLATOR NOISE TC (6 NO.s SET)	BSII
5271613	570105999918	ISOLATOR NOISE TC 6BTA	BSIII
3942659	278601999836	ISOLATOR NOISE 6BTA5.9	BSIII BSIV
3935878	278601989918	TAPPET GASKET TC SINGLE PACKING 6BT 5.9	BSIII
5309255	278605995308	GASKET VALVE COVER ISBe5.9L	BSIV BSVI
5367848	278615995304	GASKET, INTEGRATED WIRING ISBe6.7	BSIV BSVI
5716654	573705995303	TAPPET COVER GASKET INTEGRATED WIRING ISBe5.6L (Old: 5566179 – 570105995306)	BSVI

GASKETS

PART NUMBER	OEM REFERENCE	DESCRIPTION	EMISSION
5565718	570105995305	TAPPIT COVER GASKET INTEGRATED WIRING ISBe6.7	BSVI
3901356	278614999902	GASKET TURBO CHARGER	BSII
3905443	278614999915	MANIFOLD GASKET (6 PCS SET)	BSII
3929881	278614995304	MANIFOLD GASKET ISBe5.9L	CNG
5288690	278614995301	MANIFOLD GASKET TC (SINGLE PACKING)	BSII
3914386	278603999921	MAIN BEARING PLATE GASKET	BSII BSIII BSIV
3282113	278614999903	TURBO GASKET	BSIIBSIII BSIV
3928832	278605999901	SIDE COVER GASKET / PUSH ROD COVER GASKET	BSIIBSIII BSIV
3938152	278601989912	MAIN FOLD INTAKE GASKET (14 HOLE GASKET)	BSIIBSIII BSIV
3914385	278607989921	TIMING PLATE GASKET ISBe5.9L	BSIIBSIII BSIV

GASKETS

PART NUMBER	OEM REFERENCE	DESCRIPTION	EMISSION
3918673	278607999926	TIMING PLATE GASKET ISBe5.9L	BSIIBSIII BSIV
3916131	278607999918	GEAR HOUSING GASKET " Y " PACKING	BSII BSIII BSIV
5523855	573705995301	TIMING HOUSING GASKET ISBe5.6L	BSVI
5664401	570114995304	MANIFOLD EXHAUST GASKET BS6 5.6L AND 6.7L ASHWAMEDH AND ATULYA (Old: 5447591 – 278614995308)	BSVI
3932063	220014115301	MANIFOLD EXHAUST GASKET 6CTA 8.3L (SINGLE PACKING)	BSIII
3936993	220014105301	MANIFOLD INTAKE GASKET 6CTA8.3L	BSIII
3947530	278614995303	MANIFOLD COVER INTAKE GASKET ISBe6.7L PRIMA	BSIV BSVI
2830559	570118997102	OIL COOLER CORE GASKET ISBe6.7L PRIMA	BSIV BSVI
5476573	573718995302	OIL COOLER GASKET ISBe 6.7L PRIMA	BSIV BSVI

GASKETS

PART NUMBER	OEM REFERENCE	DESCRIPTION	EMISSION
3974127	573718995301	FILTER HEAD GASKET FILTER HEAD	BSIV BSVI
5479010	278603999846	SHIM FRICTION ENHANCING ISBe5.9L	BSIV BSVI
5293257	278615995302	STARTER MOTOR GASKET ISBe5.9L	BSII BSIII BSIV
3918256	278618999910	OIL COOLER PLATE GASKET INNER ISBe5.9L	BSII BSIII BSIV
3929792	278618999906	OIL COOLER PLATE GASKET OUTER ISBe5.9L	BSII BSIII BSIV
3913352	278620999941	SIDE COVER ADAPTER GASKET	BSII BSIII BSIV
3939258	220014105302	COVER PLATE GASKET	BSII BSIII BSIV
3283767	278605995306	PUSH ROD COVER GASKET 4BT	STAGE II

RUNNING PARTS



PART NUMBER	OEM REFERENCE	DESCRIPTION	EMISSION
5524756	573718999902	OIL PUMP ASHWAMEDHA ISBe5.6L	BSVI
3937404	278618999933	OIL PUMP ASSEMBLY ISBe5.9L	BSII BSIII BSIV
5291050	278618990129	OIL PUMP ASSEMBLY ISBe6.7L	BSIII BSIV
4939585		OIL PUMP ASSEMBLY 4BT3.9L INDUSTRIAL	STAGE II
5524758	570120990143	WATER PUMP ASSEMBLY 4BT AND 6BT (Old:3285410-278620999959)	BSII
5587628	573720999901	WATER PUMP ASSEMBLY ISBe6.7L AND ISBe5.6L ASHWAMEDH AND ATULYA	BSVI
4094034	886320000002	WATER PUMP ASSYEMBLY 6BTA5.9L	BSIII
5444109	278620990220	WATER PUMP ASSEMBLY ISBe5.9L AND ISBe5.9L (HIGH FLOW)	BSIII BSIV
3978324	570120997001	IDLER PULLEY ISBe5.9L AND 6.7L	BSIV BSVI

RUNNING PARTS



PART NUMBER	OEM REFERENCE	DESCRIPTION	EMISSION
3922900	278615999902	BELT TENSIONER ASSEMBLY ISBe5.9L	BSII BSIII BSIV
5621847	570105999813	BELT TENSIONER ASSEMBLY ISBe5.9L/6.7L (Old: 3976834 -570120999907)	BSIII BSIV BSIV
3914462	278620999903	FAN PULLEY ISBe5.9L/6.7L	BSII BSIII BSIV
3943591	207615999902	FAN PULLEY 1:2 RATIO ISBe5.9L	BSII BSIII BSIV
3935363	278620999935	FAN PULLY TC 4BT (CASTING) INDUSTRIAL	STAGE II
3936668	278620999931	SPACER FAN (WATER PUMP HUB)	BSII BSIII BSIV
3936581	278620999926	SPACER FAN ISBe6.7L (WATER PUMP HUB)	BSIII
5263160	278620999825	FAN SUPPORT ISBe5.9L/6.7L	BSII BSIII BSIV BSVI

RUNNING PARTS



PART NUMBER	OEM REFERENCE	DESCRIPTION	EMISSION
4981215	292013110397	FAN SUPPORT AMW	BSIII
5259157	278603990126	V BELT RIBBED 8PK1422	BSII BSIII BSIV BSVI
2868267	278620999962	V BELT RIBBED 8PK1363	BSII BSIII BSIV BSVI
3289831	570120996301	V BELT RIBBED 8PK2401	BSII BSIII BSIV BSVI
5664841	570120996310	FAN BELT PRIMA ISBe6.7L	BSIV BSVI
3288768	573720996302	FAN BELT ISBe5.6L ASHWAMEDHA ENGINE 8PK1420	BSVI
5446149	278620999841	V RIBBED BELT 8PK1596	BSII BSIII BSIV

RUNNING PARTS



PART NUMBER	OEM REFERENCE	DESCRIPTION	EMISSION
5311903	278620996303	V BELT RIBBED 8PK2108	BSII BSIII BSIV
3289124	286320996302	V BELT RIBBED 8PK1700	BSII BSIII BSIV
5301923	570120996307	V BELT RIBBED 8PK1993	BSII BSIII BSIV
5258156	278620996305	V BELT RIBBED 8PK1632	BSII BSIII BSIV
3972387	278620996304	V BELT RIBBED 8PK2150	BSIII BSIV
3289034	570120996305	V BELT RIBBED 8PK1638	BSII BSIII BSIV
3972375	278620990201	V BELT RIBBED 8PK2124	BSIII BSIV
3901895	278607999984	CAP FILLER (TAPPET CAP)	BSII
5271331	278601990196	CAP FILLER (TAPPET CAP)	BSIII

RUNNING PARTS



PART NUMBER	OEM REFERENCE	DESCRIPTION	EMISSION
3903463	278601999917	TIMING COVER CAP	BSIII BSIV
3928404	278605999927	VALVE COVER PLAIN	BSII
3928405	278605999932	VALVE COVER (2 Hole) 6BT	BSII
5332814	278605994720	VALVE COVER TC 6BT	BSIII
5478996	278605990141	VALVE COVER 6BT ISBe5.9L	BSIV
5303290	278605994708	VALVE COVER AJINKYA	BSIV
5303152	278605994710	VALVE COVER ISBe5.9L	BSIV BSIV
3977965	570105994705	VALVE COVER ISBe6.7L	BSIII BSIV BSVI
5590615	570105994714	VALVE COVER ISBe6.7L	BSVI
4947829	278603999936	DAMPER PULLEY	BSII
3918999	278603999947	DAMPER PULLEY	BSIII

RUNNING PARTS



PART NUMBER	OEM REFERENCE	DESCRIPTION	EMISSION
5267980	278603990161	DAMPER PULLEY ISBe 5.9L	BSIII BSIV
5303964	278603997005	CRANKSHAFT FLANGE ISBe5.9L	BSIII BSIV
5365653	278603990236	DAMPER VISCOUS VIBRATION ISBe5.9L	BSIII BSIV
5256139	570103990131	DAMPER VISCOUS VIBRATION ISBe6.7L PRIMA	BSIII BSIV
5530432	278603990259	DAMPER VISCOUS VIBRATION ISBe5.9L UMBRELLA	BSIV
5481169	278603997006	CRANKSHAFT FLANGE ISBe5.9L/5.6L	BSIV BSVI
5263196	278603995403	CRANKSHAFT FLANGE	BSIII
5256812	278603990253	DAMPER VISCOUS VIBRATION ISBe6.7L PRIMA	BSIII
5269122	278614993704	EXHAUST MANIFOLD	BSIII

RUNNING PARTS



PART NUMBER	OEM REFERENCE	DESCRIPTION	EMISSION
5524686	570114999805	EXHAUST MANIFOLD ISBe6.7L	BSVI
5481540	573714990101	EXHAUST MANIFOLD ISBe5.6L SIGNA	BSVI
5481401	573714993701	EXHAUST MANIFOLD ISBe5.6L	BSVI
5444155	278614993715	EXHAUST MANIFOLD ISBe5.9/6.7	BSIII BSIV
3979211	278614993703	EXHAUST MANIFOLD ISBe5.9L/6.7L	BSIII
3910881	278614999917	EXHAUST MANIFOLD (CNG)	BSII
3917700	278614999932	EXHAUST MANIFOLD	BSII
5444156	278614993716	EXHAUST MANIFOLD ISBe5.9L	BSIV
3905771	278601999979	INTAKE MANIFOLD COVER (PLATE 14 HOLE)	BSIII
3908086	278601999978	INTAKE MANIFOLD COVER (NORMAL)	BSII
5303962	278614994703	COVER INTAKE MANIFOLD ISBe5.9L	BSIV

RUNNING PARTS



PART NUMBER	OEM REFERENCE	DESCRIPTION	EMISSION
3920551	278601999961	INTAKE MANIFOLD COVER PLATE (14 HOLE)	BSII
4990696	278609990122	INTAKE MANIFOLD COVERPLATE (14 HOLE)	BSIII
3285098	278620999946	BELT TENSIONER BRACKET	BSII BSIII BSIV
3925207	278615993303	BELT TENSIONER BRACKET	BSII BSIII BSIV
3905313	278607989903	FUEL PUMP BRACE	BSIIBSIII BSIV
3936646	278607999810	FUEL PUMP BRACE	BSII BSIII BSIV
3936647	278607999811	FUEL PUMP BRACE	BSII BSIII BSIV
4892239	570103994701	COVER PLATE (ROCKER LEVER)	BSII BSIII BSIV

RUNNING PARTS



PART NUMBER	OEM REFERENCE	DESCRIPTION	EMISSION
3927167	278618999927	CYLINDER BLOCK STIFFENER	BSII BSIII BSIV
3936599	278618999935	OIL SUMP/PAN	BSIII
5400011	278618999995	OIL SUMP/PAN ISBe5.9L AJINKYA UMBRELLA	BSIV
4898036	278601998202	OIL SUMP/PAN ISBe6.7L	BSIII BSIV
5524564	570101999815	OIL PAN ISBe6.7L ATULYA	BSVI
4938655	570101999920	OIL PAN ADAPTER ISBe6.7L	BSIV
3945252	278614999965	SPACER MOUNTING ISBe5.9L/6.7L (MANIFOLD)	BSIII BSIV
3903924	278603999931	TIMING PIN	BSII BSIII
3913994	278603999930	TIMING PIN O RING	BSII BSIII
3919683	278603999933	HOUSING TIMING PIN (HOUSING PIN PLATE)	BSII BSIII BSIV
5591543	570105999814	CROSSHEAD VALVE ISBe6.7L	BSVI

RUNNING PARTS



PART NUMBER	OEM REFERENCE	DESCRIPTION	EMISSION
3943626	278605999980	CROSSHEAD VALVE ISBe5.9/6.7	BSII BSIII BSIV
3940639	278601989922	INJECTOR CLAMP 6BTA 5.9L	BSIII BSIV
5259180	570101994202	INJECTOR CLAMP ISBe6.7L	BSVI
4988748	278609999808	FUEL TRANSFER PUMP / FEED PUMP 6BTA5.9L(CUMMINS 4BT, HYUNDAI, JCB) INDUSTRIAL	BSII
5398032	278607999865	FUEL TRANSFER PUMP / FEED PUMP 6BTA5.9L	BSIII
3925955	278609999903	FILTER HEAD ADAPTER	BSII BSIII
3942453	278607989958	FILTER HEAD ADAPTER	BSII BSIII
3936665	278607989908	T MALE UNION	BSII
4946178	278603999918	MAIN BEARING PLATE	BSII BSIII BSIV

RUNNING PARTS



PART NUMBER	OEM REFERENCE	DESCRIPTION	EMISSION
5483031	278609999963	HEAD FUEL FILTER (17 NO HOLE)	BSIII
3931892	278609999908	HEAD FUEL FILTER (19 NO HOLE)	BSII
4989116	278607990106	HEAD FUEL FILTER (DOUBLE FILTER)	BSII BSIII
3918954	278618999903	OIL FILTER PLATE (4BT3.9L, ISBe5.9L)	BSII BSIII BSIV
3936365	278618999949	OIL PUMP VALVE SPRING ISBe5.9L/6.7L	BSII BSIII BSIV
3918428	278618999909	PRESSURE PLUNGER ISBe5.9L	BSIII BSIV
3925009	278618999902	SPRING COLUMN ISBe5.9L	BSIII BSIV
4983059	278601990200	BREATHER WITH PIPE	BSIII BSIV
3921558	278618999905	OIL COOLER ASSEMBLY ISBe5.9L	BSII BSIII BSIV

RUNNING PARTS



PART NUMBER	OEM REFERENCE	DESCRIPTION	EMISSION
3975818	570118990106	OIL COOLER ASSEMBLY ISBe6.7L	BSIV BSVI
4983354	570118990104	HEAD OIL FILTER ASSEMBLY ISBe6.7L	BSIV
5561556	573718999901	HEAD OIL FILTER ASSEMBLY ISBe6.7L	BSVI
5583127	573718999810	HEAD OIL FILTER ISBe5.6L	BSVI
3966164	570101990116	BREATHER CONNCTOR ISBe6.7L	BSIII BSIV BSVI
5290517	278601989934	BREATHER HEAD ISBe5.9L	BSIIIBSIV
3927913	278605999902	PUSH ROD COVER (SIDE COVER PLATE)	BSII BSIII
5447782	278605994721	PUSH ROD COVER ISBe5.9L	BSIV
3935338	278614999931	TURBO CLAMP BIG	BSII BSIII BSIV

RUNNING PARTS



PART NUMBER	OEM REFERENCE	DESCRIPTION	EMISSION
3935339	278614999942	TURBO CLAMP SMALL	BSII BSIII BSIV
5621117	573701990145	UPPER GASKET ISBe5.6L ASHWAMEDHA	BSVI
5621116	573701990147	LOWER GASKET ISBe5.6L ASHWAMEDHA	BSVI
5621118	570101990221	UPPER GASKET KIT ISBe 6.7L ATULYA	BSVI
5621120	570101990222	LOWER ENGINE GASKET KIT 6.7L	BSVI
5316500	278601990226	UPPER ENGINE GASKET ISBe5.9L	BSIV
5316503	278601990227	LOWER ENGINE GASKET ISBe5.9L	BSIV
3238432	NA	FULL SET GASKET (UPPER+LOWER) ISBe5.9L AJINKYA	BSIV
3238431	NA	FULL SET GASKET (UPPER+LOWER) ISBe5.9L UMBRELLA	BSIV

RUNNING PARTS



PART NUMBER	OEM REFERENCE	DESCRIPTION	EMISSION
5523588	278601995313	UPPER ENGINE GASKET KIT	BSIV
3238433	NA	FULL SET GASKET 6BTA (UPPER+LOWER)	BSII
3238476	NA	FULL SET GASKET (BSIII UPPER ENGINE AND BSII LOWER ENGINE)	BSIII
3238434	NA	FULL SET GASKET (UPPER+LOWER)	BSIII
3923896/ 3918675	278601989902/ 278601999994	COVER GEAR TIMING HOUSING PLATE (3920758) 6BTA5.9L	BSIII
3923898	278601999995	COVER GEAR TIMING/ HOUSING PLATE	BSII BSIII
3935583	278609999993	COVER GEAR TIMING/ HOUSING PLATE ISBe5.9L UMBRELLA , AJINKYA	BSIV
5523853	573703994702	COVER GEAR TIMING/ HOUSING PLATE ISBe5.6L	BSVI
3920758	278605990108	TIMING HOUSING 6BT (3 HOLES) (3923896 COVER)	BSI BSII BSIII

RUNNING PARTS



PART NUMBER	OEM REFERENCE	DESCRIPTION	EMISSION
5264738	278605999817	TIMING HOUSING PLATE 6BT5.9L (4 HOLES)	BSIII BSIV
5293884	278605990117	TIMING HOUSING PLATE ISBe5.9L (REAR STANDARD PRIMA LX)	BSIII BSIV
5396544	278605993704	TIMING HOUSING PLATE ISBe5.9L UMBRELLA, AJINKYA	BSIV
4936423	570105990107	TIMING HOUSING PLATE ISBe6.7L	BSIV
5289179	278605994715	TIMING GEAR COVER(FRONT) ISBe6.7L	BSIII BSIV
5291220	570105994710	TIMING HOUSING PLATE ISBe6.7L ATULYA	BSVI
5523856	573705993801	TIMING HOUSING PLATE ISBe5.6L	BSVI
4080631	278620999925	THERMOSTAT	BSII
5345973	278620999828	THERMOSTAT	BSIII BSIV
5292708	570120990127	THERMOSTAT ISBe6.7L/5.6L	BSVI

RUNNING PARTS



PART NUMBER	OEM REFERENCE	DESCRIPTION	EMISSION
4093816	278620999803	THERMOSTAT HOUSING	BSII
3923331	278620995301	THERMOSTAT HOUSING COVER	BSII
4089648	NA	UPPER ENGINE GASKET 4BT EXCAVATOR JS140 / SANY140 3.9L	INDUSTRIAL
3802375	NA	LOWER ENGINE GASKET 4BT EXCAVATOR JS140 / SANY140 3.9L	INDUSTRIAL
3283333	NA	HEAD GASKET 4BT EXCAVATOR JS140 / SANY140 3.9L	INDUSTRIAL
3238344	NA	4BT3.9C ENGINE OVERHAULING KIT EXCAVATOR JS140 / SANY140	INDUSTRIAL

SEAL O RINGS

PART NUMBER	OEM REFERENCE	DESCRIPTION	EMISSION
3906698	570120997701	WATER PUMP O RING	BSII BSIII
3929457	278618999908	OIL FILTER HEAD O RING	BSII BSIII
3903475	278601999918	TIMING COVER BLACK CAP O RING	BSII BSIII
3969698	220022109903	FUEL PUMP SEAL O RING	BSII BSIII
3915772	278603999928	TIMING PIN HOUSING O RING	BSII BSIII
3909356	278607999913	SEAL RECTANGULAR RING (INJECTOR WASHER)	BSII
3912473	278603999920	MAIN BEARING OIL SEAL PLATE O RING	BSII BSIII
3906659	278609999933	SEAL INJECTOR	BSII

DIPSTICK AND TUBE OIL GAUGE

PART NUMBER	OEM REFERENCE	DESCRIPTION	EMISSION
4093786	278601999807	TUBE OIL GAUGE 53" (SUITABLE FOR PART NO. 4093790) ISBe5.9L/6.7L	BSII BSIII BSIV BSVI
4093790	278601999809	DIPSTICK 57" " (SUITABLE FOR PART NO. 4093790) ISBe5.9L/6.7L	BSII BSIII BSIV BSVI
4094047	278618996901	TUBE OIL GAUGE 48" (SUITABLE FOR PART NO. 4094048)	BSIII BSIV
4094048	278618999982	DIPSTICK 53" (SUITABLE FOR PART NO.4094047)	BSIII BSIV
4093784	278601999805	TUBE OIL GAUGE 42" (SUITABLE FOR PART NO.4093791)	BSII
4093791	278601999810	DIPSTICK 47" (SUITABLE FOR PART NO.4093784)	BSII
3931883	278601999951	TUBE OIL GAUGE 53"	BSII
4093785	278601999806	TUBE OIL GAUGE 38" (SUITABLE FOR PART NO. 4093789)	BSIII

DIPSTICK AND TUBE OIL GAUGE

PART NUMBER	OEM REFERENCE	DESCRIPTION	EMISSION
4093789	278601999808	DIPSTICK 43" (SUITABLE FOR PART NO.4093785)	BSIII
4093787	278601996908	TUBE OIL GAUGE 24" 4BT (SUITABLE FOR PART NO.4093792)	INDUSTRIAL
4093792	NA	DIPSTICK 28" 4BT (SUITABLE FOR PART NO.4093787)	INDUSTRIAL
4080672	NA	TUBE OIL GAUGE 3" 4BT	INDUSTRIAL
4080673	NA	DIPSTICK 9" 4BT	INDUSTRIAL
5285649	278601990143	DIPSTICK 57"	BSIV
5481297	NA	DIPSTICK 58"	BSIV
5445623	278601999735	DIPSTICK 59"	BSIV
5263199	570101999924	OIL GAUGE + DIPSTICK 57" SET	BSIII BSIV
3976999	570118990110	OIL GAUGE + DIPSTICK 49" SET	BSIII BSIV

DUMMY

PART NUMBER	OEM REFERENCE	DESCRIPTION	EMISSION
KIT3238082	NA	BLOCK DUMMY KIT	BSII BSIII BSIV
4938189	278601989936	WATER DUMMY (SUITABLE FOR PART NO. 3812090 – 5 NOS)	BSII BSIII BSIV
3900956	278601999907	OIL DUMMY (3 NOS)	BSII BSIII BSIV
3900958	278605999937	CAM DUMMY (SIDE DUMMY) - 1 NOS	BSII BSIII BSIV
3900687	278601999910	CAM DUMMY (DUST DUMMY) - 1 NOS	BSII BSIII BSIV
3007635	278601999906	BLOCK DUMMY - 4 NOS	BSII BSIII BSIV
3900955	278601999915	BLOCK DUMMY - 2 NOS	BSII BSIII BSIV

DUMMY

PART NUMBER	OEM REFERENCE	DESCRIPTION	EMISSION
3007632	570101999901	BLOCK DUMMY - 1 NOS	BSII BSIII BSIV
5263672	286301999922	HEAD DUMMY - 11 NOS	BSII BSIII BSIV
3914035	570101999922	PLUG EXPANSION	BSII BSIII BSIV

HOSE AND PIPES

PART NUMBER	OEM REFERENCE	DESCRIPTION	EMISSION
3162001	278609999913	MANIFOLD FUEL PIPE	BSII
3936669	278614999943	RETURN FUEL PIPE	BSIII
3991513	278609996903	TUBE AIR FUEL CONTROL (PUMP-HEAD 2SIDE SCREW)	BSII
4990700	T06560000304	TUBE AIR FUEL CONTROL (2 SIDE BENJO)	BSIII
3936670	278609999946	TUBE, AIR FILTER CONTROL (1 SIDE BENJO -1 SIDE NUT)	BSII
3928425	278607999939	TUBE FUEL SUPPLY (PIPE SMALL)	BSII
3921992 3977790	278618999983 570118996902	TUBE OIL SUCTION ISBE5.9L	BSIII BSIV
5259152	278613990120	TUBE CPR WATER OUTLET	BSII

HOSE AND PIPES

PART NUMBER	OEM REFERENCE	DESCRIPTION	EMISSION
5290294	570113996904	TUBE CPR WATER INLET ISBe6.7L	BSIII BSIV
5290293	570113996905	TUBE,CPR WATER OUTLET ISBe6.7L	BSIII BSIV
5291911	570113996906	TUBE CPR WATER OUTLET ISBe6.7L	BSIII BSIV
4940552	570107996912	TUBE FUEL SUPPLY ISBe6.7L	BSIV
5442948	278607996945	TUBE FUEL SUPPLY	BSII BSIII
5405345	278607996948	TUBE FUEL SUPPLY ISBe5.9L/5.6L	BSIV BSVI
5405343	278607996949	TUBE FUEL SUPPLY ISBe5.9L/5.6L	BSIV BSVI
5405486	278607996942	TUBE FUEL SUPPLY ISBe5.9L/5.6L	BSIV BSVI

HOSE AND PIPES

PART NUMBER	OEM REFERENCE	DESCRIPTION	EMISSION
5473806	278609999831	COUPLING ELBOW HOSE ISBe5.9L/5.6L	BSIV BSVI
5307344	278613999934	COUPLING ELBOW HOSE	BSIII BSIV
5339799	278607999857	CONNECTOR (QUICK DISCONNECT) ISBe 5.9L/5.6L	BSIV BSVI
5396608	278601996801	T MALE BRANCH PIPE ISBe5.9L/5.6L	BSIV BSVI
5405482	278607996941	TUBE FUEL DRAIN ISBe5.9L	BSIV
5339793	278607996934	TUBE FUEL DRAIN ISBe5.9L	BSIV
4994934	570107996905	TUBE FUEL DRAIN ISBe6.7L	BSIII BSIV
5304953	278607996922	TUBE FULE FUEL DRAIN ISBe5.9L	BSIV
5566230	570107996940	TUBE FUEL SUPPLY ISBe6.7L	BSVI

HOSE AND PIPES

PART NUMBER	OEM REFERENCE	DESCRIPTION	EMISSION
5566229	570107996939	TUBE INJECTOR FUEL SUPPLY ISBe6.7L	BSVI
5342448	278614996905	TUBE TURBO OIL SUPPLY ISBe5.9L	BSIII BSIV
3918562	278601995827	FLEXIBLE HOSE	BSIV
5269237	278607996901	TUBE FUEL DRAIN (BOTH SIDE 19 NO. BENJO)	BSIII
5260332	278607996916	RETURN PIPE (17 NO. BENJO AND OUTER THREAD SMALL)	BSII BSIII
5339802	278607996935	TUBE FUEL SUPPLY ISBe5.9L	BSIV
4930058	570107996914	TUBE FUEL SUPPLY ISBe 6.7L	BSVI
3935321	278609999924	TUBE FUEL SUPPLY	BSII

HOSE AND PIPES

PART NUMBER	OEM REFERENCE	DESCRIPTION	EMISSION
4983351	278607996905	TUBE FUEL SUPPLY (PUMP - INJECTOR)	BSIII
5267723	278607996904	TUBE FUEL SUPPLY	BSIII
4093859	278607996917	TUBE FUEL DRAIN	BSII
3935350	278607999969	TUBE FUEL SUPPLY (BIG PIPE)	BSII
4080693	278607989923	TUBE FUEL SUPPLY	BSII
4093856	278614995811	HOSE FLEXIBLE (AIR COMPRESSOR)	BSIII
3909548		FLEXIBLE HOSE	BSII BSIII
4093806	278621999907	HOSE FLEXIBLE ISBe5.9L (1 SIDE BANJO - 1 SIDE NUT)	BSII BSIII BSIV

HOSE AND PIPES

PART NUMBER	OEM REFERENCE	DESCRIPTION	EMISSION
3281504	278614999923	TURBO - HOSE FLEXIBLE ISBe5.9L SHORT (TWIST TYPE)	BSII BSIII
3919591	278620999929	TURBO HOSE FLEXIBLE ISBe5.9L MEDIUM (TWIST TYPE)	BSII BSIII
3920603	278618999946	TURBO - HOSE FLEXIBLE LONG (TWIST TYPE)	BSII BSIII
5263842	570114995801	HOSE FLANGE (TURBO STRAIGHT HOSE)	BSII BSIII
3936630	278601999997	HOSE PLAIN (MANIFOLD TURBO)	BSII
3936631	278601999947	HOSE PLAIN (TURBO HOSE)	BSII
3915489	278614999934	BREATHER PLAIN (HOSE 1/2 ")	BSII
3918614	278605999906	BREATHER PLAIN (HOSE 1 FEET)	BSII

HOSE AND PIPES

PART NUMBER	OEM REFERENCE	DESCRIPTION	EMISSION
4094050	278618995803	BREATHER HOSE PLAIN (L TYPE BIG)	BSIII
3281248	278614999921	CONNECTION TURBO OIL DRAIN	BSII
3281249	278614999922	CONNECTION TURBO OIL DRAIN	BSII
3918583	278618999947	CONNECTION TURBO OIL DRAIN	BSII
4080774	278618996904	TUBE BRATHER PIPE (OIL BREATHER STEEL TYPE)	BSII

NOZZLE PIPE

PART NUMBER	OEM REFERENCE	DESCRIPTION	EMISSION
3937214	278618999934	PISTON COOLING NOZZLE	BSII BSIII
4937308	570103999907	PISTON COOLING NOZZLE ISBe6.7L/5.6L	BSIV BSVI
3931842	278607999946	NOZZLE PIPE SET INLINE PUMP (FUEL PIPE) 123	BSII
3931843	278607999947	NOZZLE PIPE SET INLINE PUMP (FUEL PIPE) 456	BSII
3282745	278607989901	NOZZLE PIPE SET ROTARY PUMP 123	BSII
3282746	278607989902	NOZZLE PIPE SET ROTARY PUMP 456	BSII
5345368	278601989924	NOZZLE PIPE SET ROTARY PUMP 123	BSIII
5345369	278601989925	NOZZLE PIPE SET ROTARY PUMP 456	BSIII

TUBE, INJECTOR FUEL SUPPLY- ISBe6.7 BSIII AND BSIV

PART NUMBER	OEM REFERENCE	DESCRIPTION	EMISSION
3978036	570107996904	TUBE INJECTOR FUEL SUPPLY (6th injector) ISBe6.7 Prima	BSIV
3978031	570107996901	TUBE INJECTOR FUEL SUPPLY (1st injector) ISBe6.7 Prima	BSIV
4935976	570107996920	TUBE INJECTOR FUEL SUPPLY (4th injector) ISBe6.7L Prima	BSIV
4935981	570107996921	TUBE, INJECTOR FUEL SUPPLY (5th injector) ISBe6.7L Prima	BSIV
3978032	570107996902	TUBE, INJECTOR FUEL SUPPLY ISBe6.7L Prima	BSIV
4935982	570107996922	TUBE, INJECTOR FUEL SUPPLY (2nd AND 3rd injector) ISBe6.7L Prima	BSIV
4935974	570107996923	TUBE INJECTOR FUEL SUPPLY ISBe6.7L Prima	BSIV

TUBE, INJECTOR FUEL SUPPLY- ISBe6.7 BSIII AND BSIV

PART NUMBER	OEM REFERENCE	DESCRIPTION	EMISSION
3978034	570107996903	TUBE INJECTOR FUEL SUPPLY ISBe6.7L Prima	BSIV
5303970	278601996902	TUBE INJECTOR FUEL SUPPLY (1 st ,2 nd ,3 rd injector) ISBe5.9L Ajinkya	BSIII BSIV
5303972	278601996903	TUBE INJECTOR FUEL (4 th , 5 th ,6 th injector) ISBe5.9L Ajinkya	BSIII BSIV
5304407	278607996918	TUBE INJECTOR FUEL ISBe5.9 AJINKYA	BSIII BSIV

TUBE INJECTOR FUEL SUPPLY ISBe5.9 BSIV UMBRELLA

PART NUMBER	OEM REFERENCE	DESCRIPTION	EMISSION
5367233	278607996953	TUBE INJECTOR FUEL SUPPLY ISBe5.9L UMBRELLA	BSIV
5370166	278607996952	TUBE INJECTOR FUEL SUPPLY (QTY-2) ISBe5.9L UMBRELLA	BSIV
5370164	278607996951	TUBE INJECTOR FUEL SUPPLY ISBe5.9L UMBRELLA	BSIV
5370168	278607996955	TUBE INJECTOR FUEL SUPPLY ISBe5.9L UMBRELLA	BSIV
5370170	278607996950	TUBE INJECTOR FUEL SUPPLY ISBe5.9L UMBRELLA	BSIV
5442529	278607996954	TUBE,INJECTOR FUEL SUPPLY ISBe5.9L UMBRELLA	BSIV

TUBE INJECTOR FUEL SUPPLY ISBe5.9 BSIV UMBRELLA

PART NUMBER	OEM REFERENCE	DESCRIPTION	EMISSION
3936607	278614999928	CONNECTION EXHAUST OUTLET ISBe5.9L	BSII BSIII
5483416	573714999806	CONNECTION EXHAUST OUTLET ISBe5.9L	BSIV
4939408	570114999901	CONNECTION EXHAUST OUTLET ISBe6.7L	BSIV
5297752	278609993702	CONNECTION AIR INTAKE (Old: 4080753 – 278601999804)	BSII BSIII
5266557	278601994702	CONNECTION SPACER	BSII BSIII
3975583	278609999804	CONNECTION AIR INTAKE	BSII
4094103	278609990120	CONNECTION AIR INTAKE	BSII
3924990	278601999956	CONNECTION AIR INTAKE	BSII
4093948	278609993701	CONNECTION AIR INTAKE	BSIII
3918685	278601999969	PIPE AIR TRANSFER (WITH PG HOLE)	BSII
4094043	278609990118	PIPE AIR TRANSFER	BSII

TUBE INJECTOR FUEL SUPPLY ISBe5.9 BSIV UMBRELLA

PART NUMBER	OEM REFERENCE	DESCRIPTION	EMISSION
4933777	570109996902	PIPE AIR TRANSFER	BSIII
5336251	278609996906	PIPE AIR TRANSFER ISBe5.9L	BSIII BSIV
4991821	570109996901	PIPE AIR TRANSFER ISBe6.7L	BSIV
3923178	278601999957	PIPE AIR TRANSFER ISBe6.7L	BSIII BSIV
4991396	278620999986	CONNECTION WATER INLET	BSII
3354866	278620999984	CONNECTION WATER INLET	BSIII
5307631	278620999808	CONNECTION WATER INLET ISBe5.9L/6.7L	BSIV BSVI
5446160	278620990202	CONNECTION WATER INLET ISBe5.9L/6.7L	BSIV BSVI
5446147	278620990203	CONNECTION WATER INLET ISBe5.9L/6.7L	BSIV BSVI
5291177	278620999999	CONNECTION WATER INLET ISBe5.9L	BSIII BSIV
5260167	570120999901	CONNECTION WATER INLET ISBe6.7L	BSIII

TUBE INJECTOR FUEL SUPPLY ISBe5.9 BSIV UMBRELLA

PART NUMBER	OEM REFERENCE	DESCRIPTION	EMISSION
3934878	NA	CONNECTION WATER INLET (4BT)	INDUSTRIAL
4080780	278620999948	CONNECTION WATER OUTLET	BSII
4080781	278620999998	CONNECTION WATER OUTLET	BSII
5272656	278620990150	CONNECTION WATER OUTLET	BSIII
5447418	278620999845	CONNECTION WATER OUTLET	BSIII BSIV

CLUTCH, FAN AND ASSEMBLY

PART NUMBER	OEM REFERENCE	DESCRIPTION	EMISSION
5301420	278620999996	CLUTCH,FAN 180HP (20"10)	BSIII
5272005		FAN VISCOUS 22"	BSIII
4994706	278620999993	FAN VISCOUS 230HP	BSII
5525350		FAN VISCOUS 230HP	BSIII
5475924	278620999838	FAN VISCOUS 24" 180HP	BSIV
4080728	278620999955	FAN BLADE 10, 22" (VISCO) 180HP	BSII
3935332	278620999939	FAN BLADE 10, 20" HP130	BSII
4994705	278620999992	FAN BLADE 9, 24" (VISCO) 230HP	BSII
4080727	278620999954	FAN BLADE 10, 22" 130HP	BSII

CLUTCH, FAN AND ASSEMBLY

PART NUMBER	OEM REFERENCE	DESCRIPTION	EMISSION
4080729	278620999956 LEYLAND -X7454200	FAN BLADE 10, 20"(VISCO) 130HP	BSII
5527744	573720990106	FAN + VISCOUS, 11 BLADE 24" ISBe6.7L	BSVI
5527745	573720999809	FAN, 11 BLADE 24" ISBe6.7L (WHITE)	BSIV BSVI
5527746	573720999808	VISCOUS , 11 BLADE 24" ISBe6.7L (WHITE)	BSVI
4093687	278620999964	FAN 7, BLADE 22" 130HP	BSII
5272004	278620999976	FAN 7, BLADE 22" 180HP (VISCO)	BSIII
5475923	278620999837	FAN 9, BLADE 24" 180 HP (VISCO) UMBRELLA	BSIV
4094028	278620999981	FAN 9, BLADE 24" 230HP	BSII
5272003	278620990111	FAN 7 BLADE, 22" RING TYPE 180HP	BSIII
4947063	278620999982	FAN 10 BLADE, 22" 180HP	BSIII

CLUTCH, FAN AND ASSEMBLY

PART NUMBER	OEM REFERENCE	DESCRIPTION	EMISSION
5270419	278620999983	FAN 9 BLADE, 22" RING TYPE 180HP (BUS)	BSIII
5475921	278620990195	FAN 9 BLADE, 24" RING TYPE , UMBRELLA 180HP	BSIV
5441127	570120999910	FAN 11 BLADE 26" RING TYPE ISBe6.7L 230HP	BSIV
5312976	570120990133	FAN 8 BLADE 26" RING TYPE 230HP	BSIV
5588068	573720990112	FAN + VISCOUS 9BLADE 24" ISBe5.6L ASHWAMEDHA (BLACK)	BSVI
5441126	570120990137	FAN ENGINE 11 BLADE 26" RING TYPE	BSIV BSVI
5478451	278620990198	VISCOUS WITH FAN 11 BLADE, 26" (WHITE) ISBe5.9L /6.7L/5.6L	BSIV BSVI

ALTERNATOR AND AIR COMPRESSOR



PART NUMBER	OEM REFERENCE	DESCRIPTION	EMISSION
4080671	278613999915	AIR COMPRESSOR	BSII BSIII
4994257	278613990112	AIR COMPRESSOR	BSIII
5319034	278613990154	AIR COMPRESSOR	BSIII BSIV
5666866	570113990116	AIR COMPRESSOR ISBe6.7L	BSVI
4080671	278613999915	AIR COMPRESSOR	BSII BSIII
5343037	278613999804	AIR COMPRESSOR ISBe5.9L	BSIV
5258005	570115990106	ALTERNATOR	BSIII BSIV
5476450	570115990153	ALTERNATOR ISBe5.6L/6.7L	BSVI
5263220	278615990102	ALTERNATOR 24V 90 AMP	BSII BSIII

CLUTCH APPLICATION AND FLYWHEEL (RINGS AND HOUSING)

PART NUMBER	OEM REFERENCE	DESCRIPTION	EMISSION
AX1016901	NA	DIAPHRAGM COVER ASSY 430 DIA TATA PRIMA	NA
AX1016902	NA	CLUTCH DISC 430 DIA TATA PRIMA WITH VELEO F510 FACING -2"SPLINE	NA
AX1016903	NA	DIAPHRAGM COVER ASSY 395 DIA BHARAT BENG	NA
AX1016904	NA	CLUTCH DISC 395 DIA BHARAT BENG 18 TEETH WITH VELEO 510 CF-1.75" SPLINE	NA
AX1016905	NA	CLUTCH DISC 430 BHARAT BENG 18 TEETH WITH VELEO F510 CF-1.75" SPLINE	NA
AX1016906	NA	DIAPHRAGM COVER ASSY 430 DIA BHARAT BENG	NA
AX1016907	NA	DIAPHRAGM COVER ASSY 395 DIA MAN TRUCK	NA
AX1016908	NA	CLUTCH DISC 395 DIA MAN TRUCK WITH VELEO F510 FACING -1.5" SPLINE	NA

CLUTCH APPLICATION AND FLYWHEEL (RINGS AND HOUSING)

PART NUMBER	OEM REFERENCE	DESCRIPTION	EMISSION
AX1016909	NA	CLUTCH DISC 430 DIA MAN TRUCK F510 FACING -1.5" SPLINE	NA
AX1016910	NA	DIAPHRAGM COVER ASSY 430 DIA MAN	NA
AX1016899	NA	DIAPHRAGM COVER ASSY 395 DIA TATA	NA
AX1016900	NA	CLUTCH DISC 395 DIA TATA WITH VALEO F510 FACING -1.75" SPLINE	NA
AX1015453	NA	395 DIA DIAPHRAGM COVER ASSEMBLY _ MAHINDRA NAVISTAR	NA
AX1015454	NA	395 DIA DRIVEN DISC ASSEMBLY _ MAHINDRA NAVISTAR	NA
AX1014498	NA	DIAPHRAGM COVER ASSY (GB750)	NA
AX1014825	NA	ORGANIC ROUND PLATE (GB750)	NA

CLUTCH APPLICATION AND FLYWHEEL (RINGS AND HOUSING)

PART NUMBER	OEM REFERENCE	DESCRIPTION	EMISSION
AX1014826	NA	CERAMIC FAN TYPE PLATE - 1-5 (GB750)	NA
AX1014737	NA	3' LEG CLUTCH COVER ASSY (GB750)	NA
AX1014776 AX1014777	NA	*380 DIA PRESSURE PLATE TAWA (WITH NRB BEARING) *380 DIA PRESSURE PLATE TAWA (W/O NRB BEARING)	NA
AX1014734	NA	CERAMIC FAN TYPE PLATE - 1-75 (GB750)	NA
AX1015500	NA	CLUTCH DISC ORGANIC 380 DIA ASHOK LEYLAND 1.5" SPLINE	NA
AX1015501	NA	CLUTCH DISC CERAMIC 380 DIA ASHOK LEYLAND 1.75" SPLINE	NA
AX1015499	NA	COVER ASSEMBLY DIA 380 ASHOK LEYLAND	NA
AX1014773	NA	LEVER KIT	NA
AX1014774	NA	SPRING KIT	NA

CLUTCH APPLICATION AND FLYWHEEL (RINGS AND HOUSING)

PART NUMBER	OEM REFERENCE	DESCRIPTION	EMISSION
AX1014775	NA	COLLECTOR RING	NA
AX1014735	NA	3 LEG,CLUTCH COVER ASSY - PULL TYPE (GB60)	NA
AX1014736	NA	CERAMIC FAN TYPE PLATE – 1.75” (GB60)	NA
AX1014769	NA	LEVER KIT	NA
AX1014770	NA	SPRING KIT	NA
AX1015028	NA	3' LEG CLUTCH COVER ASSY 9 HOLE CERAMIC PUSH TYPE (GB40)	NA
AX1015029	NA	3' LEG CLUTCH COVER ASSY 9HOLE ORGANIC PUSH TYPE (GB40)	NA
AX1015031	NA	4' LEG CLUTCH COVER ASSY 12HOLE CERAMIC PUSH TYPE (GB40)	NA
AX1015032	NA	ORGANIC CLUTCH 330 DIA PLATE (GB40)	NA
AX1015182	NA	CERAMIC FAN TYPE CLUTCH 330 DIA PLATE (GB40)	NA

CLUTCH APPLICATION AND FLYWHEEL (RINGS AND HOUSING)

PART NUMBER	OEM REFERENCE	DESCRIPTION	EMISSION
AX1015444	NA	3 LEG LEVER KIT	NA
AX1015448	NA	4 LEG LEVER KIT	NA
AX1015446	NA	3 LEG SPRING KIT	NA
AX1015452	NA	4 LEG SPRING KIT	NA

FLYWHEEL, RING AND HOUSING



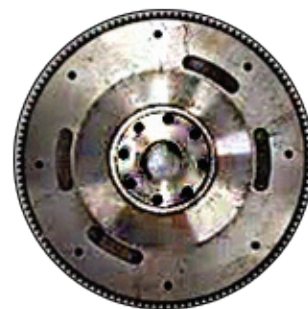
PART NUMBER	OEM REFERENCE	DESCRIPTION	EMISSION
3905427	NA	FLYWHEEL RING - 127 TEETH (4BT)	INDUSTRIAL
5293220	278603999828	FLYWHEEL RING - 138 TEETH (ALLEN KEY)	BSII
3908546	278607989928	FLYWHEEL RING - 138 TEETH ISBe5.9L	BSII BSIII BSIV BSVI
4929827	278603999827	FLYWHEEL RING - 149 TEETH ISBe6.7L	BSIII BSIV
4080741	278603999990	FLYWHEEL RING - 159 TEETH (ALLEN KEY)	BSII BSIII BSIV
4080743	278603999942	FLYWHEEL RING - 159 TEETH (THIN)	BSII BSIII BSIV
3978313	NA	FLYWHEEL RING - 159 TEETH (THICK) EXCAVATOR - HYUNDAI R210/ SANY JS200/HITACHIEX200	INDUSTRIAL
4080746	278603999969	FLYWHEEL RING - 173 TEETH (2004)	BSII BSIII BSIV

FLYWHEEL, RING AND HOUSING



PART NUMBER	OEM REFERENCE	DESCRIPTION	EMISSION
5293222	278603990196 278603990133	FLYWHEEL ASSY - 138 TEETH GB-60 2515-4018 (ALLEN KEY) 4 BOLT	BSII
5311924	278603999825 278603999801	FLYWHEEL ASSY - 138 TEETH GB-75 1613-3118	BSIII BSIV
5258729	278603990173	FLYWHEEL ASSY - 138 TEETH GB-75 AMW	BSIII INDUSTRIAL
4080744	278603999970	FLYWHEEL ASSY - 159 TEETH GB -40 1312TC-1612TC (ALLEN KEY) (4 BOLT)	BSII
3936575	278603999983 278603999982	FLYWHEEL ASSY - 173 TEETH GB-50 EX 352 DIA	BSII
5274612	286303990111	FLYWHEEL ASSY - 138 TEETH (215HP)	BSIV
4093655	278603990233	FLYWHEEL ASSY - 159 TEETH (ALLEN KEY)	BSIII BSIV
4093889	278607989925 252703110119	FLYWHEEL ASSY - 127 TEETH GB 40 BUS TYPE 330 DIA (ALLEN KEY)	BSII
2868398	NA	FLYWHEEL ASSY - 127 TEETH	INDUSTRIAL
3814262	NA	FLYWHEEL ASSY - 159 TEETH	INDUSTRIAL

FLYWHEEL, RING AND HOUSING



PART NUMBER	OEM REFERENCE	DESCRIPTION	EMISSION
3971969	NA	FLYWHEEL ASSY - 195 TEETH	INDUSTRIAL
4981723	570103990136	FLYWHEEL ASSY - 149 TEETH GB 1150/430 DIA Prima/signa	BSIV BSVI
4080800	278603999972	FLYWHEEL HOUSING ISBe5.9L	BSII BSIII BSIV
5520895	573703993801	FLYWHEEL HOUSING IS- Be5.6L	BSVI
5547684	570103993708	FLYWHEEL HOUSING ISBe6.7L SIGNA	BSVI
3936661	278603999961	FLYWHEEL HOUSING - 235HP	BSIII BSIV
5271139	278603993707	FLYWHEEL HOUSING	6B-2V
3971926	570103990124	FLYWHEEL HOUSING ISBe6.7 (BUS)	BSIII
5566739 5364167	570103993706 570103993702	FLYWHEEL HOUSING PRIMA	BSIII
5264674	NA	FLYWHEEL HOUSING	INDUSTRIAL
4963085	NA	FLYWHEEL HOUSING	INDUSTRIAL

FASTNERS - BOLTS, SCREWS AND CLAMPS

PART NUMBER	OEM REFERENCE	DESCRIPTION	EMISSION
3920779	278601999929	HEAD BOLT SMALL (M12 X 1-75 X 70)	BSII
3920780	278601999930	HEAD BOLT BIG (M12 X 1-75 X 120)	BSII
3927063	278605999975	HEAD BOLT (M12 X 1-25-6g X 130)	BSIII
3916518	278615999937	MANIFOLD BOLT BIG (M10 X 1-5 X 125)	COMMON
3901448	278620999904	MANIFOLD BOLT MED (M10 X 1-5 X 65)	COMMON
3901446	278607999986	MANIFOLD BOLT SMALL (M8 X 1-25 X 60)	BSIII
3920346	278614999918	MANIFOLD BOLT (M10 X 1-5 X 70)	BSII
3900919	278603999901	CONNECTING ROD BOLT (M11 X 1-25 X 59)	BSII
4891179	278603998002	CONNECTING ROD BOLT (M11 X 1-25 X 55)	BSIII
5286931	278601998002	SUMP BOLT (M8 X 1-25 X 20)	COMMON

FASTNERS - BOLTS, SCREWS AND CLAMPS

PART NUMBER	OEM REFERENCE	DESCRIPTION	EMISSION
3900631	278613998002	SUMP BOLT NEW MODEL (M8 X 1-25 X 25)-5	COMMON
3903112	278614999914	ALTERNATOR/FAN BOLT (M10 X 1-5 X 30)	BSIII
5284131	278613998004	BANJO CONNECTOR (M10 X 1-00 X 13-5)	COMMON
3914407	278615998001	ALTERNATOR BOLT (M10 X 1-5 X 100)	BSII
3903834	278605999936	STARTING MOTOR BOLT (M10 X 1-5 X 35)	COMMON
3901757	278620999920	WATER INLET / BT BOLT (M10 X 1-5 X 75) ISBe 5.9L	COMMON
3089316	570103998004	MANIFOLD BOLT (M10 X 1-5 X 140) ISBe6.7L	COMMON
3903990	278607999912	OIL PUMP BOLT (M10 X 1-5 X 20)	COMMON
3902460	220001143702	MANIFOLD RELATED BOLT (M10 X 1-5 X 25)	COMMON
3903464	220001143703	MANIFOLD RELATED BOLT (M10 X 1-5 X 40)	COMMON

FASTNERS - BOLTS, SCREWS AND CLAMPS

PART NUMBER	OEM REFERENCE	DESCRIPTION	EMISSION
3944593	278614999963	MANIFOLD (SPACER MOUNTING) (M10 X 1-5 X 65)	BSIII
3908226	278620999945	BOLT (M10 X 1-5-6g X 95)	COMMON
3918153	570105998003	MANIFOLD RELATED BOLT (M10 X 1-5 X 50)	BSIII
3900634	278605999939	MULTIPURPOSE (FAN) BOLT (M10 X 1-5 X 50)	BSIII
3904446	207615999901	BELT TENSIONER BOLT (M10 X 1-5 X 70)	COMMON
3900679	570120998003	MANIFOLD RELATED BOLT (M10 X 1-5 X 80)	COMMON
3903857	278603999937	VIBRATION DAPMPER BOLT (M12 X 1-25 X 36)	COMMON
3901249	278618999917	CYLINDER BLOCK LIFTING BOLT (M12 X 1-75 X 25)	COMMON
3920447	278603999922	CLUTCH HOUSING BOLT (M12 X 1-75 X 40)	COMMON
3935271	278609999929	BOLT (M12 X 1-25-6g X 15)	COMMON

FASTNERS - BOLTS, SCREWS AND CLAMPS

PART NUMBER	OEM REFERENCE	DESCRIPTION	EMISSION
3920781	278605999925	ROCKER LEVER SUPPORT BIG BOLT (M12 X 1-25-6g X 180)	BSII
5297582	286301998013	DAMPER PULLY(W WASHER) BOLT (M12 X 1-25 X 36)	COMMON
3910495	278620999913	CYLINDER BLOCK LIFTING BOLT (M12 X 1-75 X 30)	COMMON
3902451	278607999981	FLYWEEL HOUSING RELATED BOLT (M12 X 1-75 X 90)	COMMON
3089188	570103998003	FLYWEEL HOUSING RELATED BOLT (M12 X 1-75 X 110)	COMMON
3913372	286314998001	BOLT (M12 X 1-75 X 20)	BSIII
3914177	570103998002	FLYWEEL HOUSING RELATED BOLT (M12 X 1-75 X 80)	BSIII
3904217	278601999903	MAIN BEARING BOLT (M14 X 2 X 119)	COMMON
3907998	278607999954	TIMING PIN HSG SCREW (M5 X 0-8 X 17)	COMMON

FASTNERS - BOLTS, SCREWS AND CLAMPS

PART NUMBER	OEM REFERENCE	DESCRIPTION	EMISSION
3913638	278607999915	TIMING ALLU GEAR COVER BOLT (M6 X 1 X 16)	COMMON
3901865	278607999960	WATER OUTLET CONNECTOR BOLT (M6 X 1 X 20)	BSIII
3940817	278601989923	INJECTOR CLAMP BOLT (M6 X 1-6g X 22)	BSIII
3902023	278601989916	INJECTOR CLAMP BOLT (M6 X 1 X 25)	BSIII
3900625	286315998003	HEAD RELATED BOLT (M6 X 1 X 10)	COMMON
3924724	278607989905	BANJO CONNECTOR 3936670 (M8 X 1 X 17)	COMMON
3900225	278603998001	TAPPET/PUSH ROD DOOR BOLT (M8 X 1-25 X 16)	COMMON
3907049	278605999929	TAPPET COVER BOLT (M8 X 1-25 X 21)	BSII
3900227	278605999911	CAM THRUST LOCK BOLT (M8 X 1-25 X 22)	COMMON
3900677	278618999913	OIL PUMP/ ALTERNATOR BOLT (M8 X 1-25 X 30)	COMMON

FASTNERS - BOLTS, SCREWS AND CLAMPS

PART NUMBER	OEM REFERENCE	DESCRIPTION	EMISSION
3928873	278607998006	TIMING CASE BOLT SMALL (M8 X 1-25 X 40)	BSIII
3901221	278605999924	ROCKER LEVER SUPPORT SMALL BOLT (M8 X 1-25 X 75)	BSII
3924962	278603999927	TIMING DOOR (SIDE) BOLT (M8 X 1-5 X 16)	COMMON
3900630	278613998001	MULTI PURPOSE BOLT (M8 X 1-25 X 20)	COMMON
3900632	278607999906	LUBE OIL FILTER HEAD BOLT (M8 X 1-25 X 35)	COMMON
3913366	278620999909	FUEL PUMP/ THERMOSTAT HSG BOLT (M8 X 1-25 X 90)	BSII
3900633	278603999926	TIMING CASE BOLT (M8 X 1-25 X 50)	COMMON
3920344	278601999964	VALVE COVER BOLT (M8 X 1-25-6g X 21)	BSII
5273613	278609998001	MULTI PURPOSE BOLT (M8 X 1-25g X 85)	COMMON

FASTNERS - BOLTS, SCREWS AND CLAMPS

PART NUMBER	OEM REFERENCE	DESCRIPTION	EMISSION
3919995	278603998006	MULTI PURPOSE BOLT (M8 X 1-25g X 90)	BSIII
3925883	220001143719	TIMING CASE COVER BOLT (M8 X 1-25 X 16)	BSIII
3093775	570115998001	TIMING CASE COVER BOLT (M8 X 1-25 X 20)	COMMON
3901445	278607998003	TIMING COVER RELATED BOLT (M8 X 1-25 X 45)	COMMON
3902114	278607999983	FAN SUPPORT BOLT (M8 X 1-25 X 30)	COMMON
3918109	278609999901	M-FOLD COVER/ FUEL FILTER BOLT (M8 X 1-25 X 25)	COMMON
5289386	278605998001	VALVE COVER BOLT (M8 X 1-25-6g X 21)	BSIII
3964817	570101998005	PISTON COOLING NOZZLE BANJO BOLT (1-13x0-5x0-5)	ISBe 6.7/5.6
3278448	278607999994	AIR COMPRESSOR BOLT (M10 X 1-5 X 25)	COMMON

FASTNERS - BOLTS, SCREWS AND CLAMPS

PART NUMBER	OEM REFERENCE	DESCRIPTION	EMISSION
3900629	278605999905	SCREW,HEX FLANGE HEAD CAP	COMMON
4929065	570107998801	SCREW,STUDED FLANGE CAP	COMMON
3900589 3279043 3902662 5293027	278605999941	NUT,HEXAGON FLANGE	COMMON
3678921	278605999976	PLUG THREADED(3678921)	BS IV
3928759	278605999904	SEAL GROMMET	COMMON
3904230	278605999907	HOSE CLAMP	COMMON
3924147	278618999919	OIL DRAIN BOLT 3.94BT AND 6BT 5.9ENGINE	COMMON
4926690	278619972203	PLUG,THREADED	COMMON
3916361	278607999919	SCREW, BANJO CONNECTOR OFF HIGHWAY DIMENSION M12x1.5x24	COMMON
3905860	278609999911	SCREW, BANJO CONNECTOR BS1 BS2 BS3 DIMENSION M12x1.5x24	COMMON

FASTNERS - BOLTS, SCREWS AND CLAMPS

PART NUMBER	OEM REFERENCE	DESCRIPTION	EMISSION
3920773	278618999920	OIL DRAIN BOLT SEALING WASHER 3.94BT AND 6BT5.9L ENGINE	COMMON
3903035	278607999908	SCREW, BANJO CONNECTOR 6BTA5.9 ISBe5.9 DIMENSION M6 X 1 X 15	COMMON
4094055	278609998002	SCREW, BANJO CONNECTOR BS2 6BTA5.9 AND 4BT3.9 DIMENSION M6 X 1 X 15	COMMON
3818823	278614999904	STUD,DOUBLE END PLAIN	COMMON
4946176	278607998801	STUD	COMMON
3907860	278618999935	OIL PAN SCREW 3.94BT AND 6BT 5.9 ENGINE	COMMON
4895877	570105998002	CAMSHAFT SPEED INDICATOR RING SOCKET ISBE ISBE5.9 AND ISBE6.7 DIMENSION 1.3x0.3x0.3 inch	COMMON
3902093	570101998014	SCREW,SOCKET HEAD CAP BS IV PARTS	COMMON
5317249	278601998019	SCREW SOCKET HEAD CAP BS4 ISBE5.9 M8 X 1.25 X 50	ISBE5.9

FASTNERS - BOLTS, SCREWS AND CLAMPS

PART NUMBER	OEM REFERENCE	DESCRIPTION	EMISSION
3936642	278601999944	PLUG, PIPE (HEAD PIPE)	ISBE5.9
4963765	NA	SCREW,BANJO CONNECTOR 4Bt Parts	4BT
3919448	278603999987	SCREW,SOCKET HEAD CAP 4BT Parts M6 X 1.00 X 30.	4BT
5342452	278601998037	SCREW,BANJO CONNECTOR	COMMON
4932953	278609995802	SCREW,BANJO CONNECTOR	COMMON
3957942	278609998004	SCREW,BANJO CONNECTOR	COMMON
5255716	278609998007	SCREW,CAPTIVE WASHER CAP	COMMON
3968075	278607998001	SCREW,CAPTIVE WASHER CAP ISBE5.9 M12 X 1.25 X 77	COMMON
3920854	286315998002	SCREW,CAPTIVE WASHER CAP ISBE5.9 M5 X 0.80 X 20.	COMMON
5304432	278603998010	SCREW,HEX FLANGE HEAD CAP M12 X 1.25 X 72.5	COMMON
3926846	220001143714	SCREW,HEX FLANGE HEAD CAP 4Bt Parts M8 X 1.25 X 20.	COMMON

FASTNERS - BOLTS, SCREWS AND CLAMPS

PART NUMBER	OEM REFERENCE	DESCRIPTION	EMISSION
4384070	278607998009	SCREW,HEX FLANGE HEAD CAP BS IV PARTS	COMMON
3089384	286315998001	SCREW,HEX FLANGE HEAD CAP M10 X 1.50 X 14.	COMMON
3900637	278601998024	SCREW,HEX FLANGE HEAD CAP M12 x 1.75 x 35	COMMON
3900626	278605999940	SCREW,HEX FLANGE HEAD CAP M6 x 1.00 x 12	COMMON
3900627	278607998002	SCREW,HEX FLANGE HEAD CAP M6 X 1.00 X 14.	COMMON
4017567	286322998001	SCREW,HEX FLANGE HEAD CAP M6 X 1.00 X 40.	COMMON
3280899	278601998036	SCREW,HEX FLANGE HEAD CAP M8 X 1.25 X 35.	COMMON
3921816	220001143728	SCREW,HEX FLANGE HEAD CAP M8 x 1.25 x 45.	COMMON
3990127	278605999994	SCREW,HEX FLANGE HEAD CAP M8 X 1.25 X 55.	COMMON
3922863	570115998002	SCREW,HEX FLANGE HEAD CAP M10 X 1.50 X 110.	COMMON

FASTNERS - BOLTS, SCREWS AND CLAMPS

PART NUMBER	OEM REFERENCE	DESCRIPTION	EMISSION
3944655	278614999964	SCREW,HEX FLANGE HEAD CAP M10 x 1.50 x 65	COMMON
3093956	NA	SCREW,HEX FLANGE HEAD CAP CNG M8 X 1.25 X 12.	COMMON
3920691	278618999945	PISTON PIN LOCK	COMMON
4070594	278601998012	SCREW,HEX FLANGE HEAD CAP ISBE5.9 /5.6	COMMON
3089232	570120998001	SCREW,HEX FLANGE HEAD CAP ISBE5.9 M10 X 1.50 X 45. (GROUP)	COMMON
3925344	220001143710	SCREW,HEX FLANGE HEAD CAP SIMPSON M10 x 1.50 x 30	COMMON
3282298	278613998009	SCREW,HEXAGON HEAD CAP	COMMON
3904849	278603999932	RING RETAINING	COMMON
4982774	278601998020	SCREW HEX FLANGE HEAD CAP ISBE5.9	COMMON
3680781	278607998005	SCREW HEX FLANGE HEAD CAP ISBE5.9 M12 X 1.25 X 50	COMMON

FASTNERS - BOLTS, SCREWS AND CLAMPS

PART NUMBER	OEM REFERENCE	DESCRIPTION	EMISSION
3910901	278620999965	SCREW M10X1.5X55 ISBE5.9 M10 x 1.50 x 55	COMMON
3959128	278605999989	SCREW,RKR LEVER ADJUSTING	COMMON
5289386	278605998001	SCREW STUDDED FLANGE CAP	COMMON
3935268	278609999925	SCREW,SQUARE HEAD CAP BSII	COMMON
3924725	278607999930	TUBE FUEL SUPPLY/ FUEL STAINER BANJO CONNECTOR M14 x 1.50 Length-26	COMMON
3920400	278601998051	Oil Pan 4Bt Parts M 8 x 1.25 Length- 21mm 4BT	INDUSTRIAL
5591215	570101994701	COVER ACCESS HOLE	BSVI
4080803	278615999974	SUPPORT ALTERNATOR	BSIV

FASTENERS- BOLTS, SCREWS, CLAMPS

PART NUMBER	OEM REFERENCE	DESCRIPTION	EMISSION
4315343	278615999817	HARNESS WIRING ISBe5.9	BSIII
5448903	278615999846	HARNESS WIRING ISBe5.9 AJINKYA	BSIV
5477400	278615990247	HARNESS WIRING ISBe5.9 UMBRELLA	BSIV
5477401	278615990234	HARNESS WIRING ISBe5.9 AJINKYA	BSIV
4933503	570115990111	HARNESS WIRING ISBe6.7	BSIII
5260403	570115990120	HARNESS ETR CNT MDL ISBe6.7	BSIII
4989419	570115990134	HARNESS ETR CNT MDL ISBe6.7 BUS	BSIV
4315343	278615999817	HARNESS WIRING ISBe5.9	BSIII
5448903	278615999846	HARNESS WIRING ISBe5.9 Ajinkya	BSIV
5477400	278615990247	HARNESS WIRING ISBe5.9 UMBRELLA	BSIV
5477401	278615990234	HARNESS WIRING ISBe5.9 AJINKYA	BSIV

FASTENERS- BOLTS, SCREWS, CLAMPS

PART NUMBER	OEM REFERENCE	DESCRIPTION	EMISSION
5260403	570115990120	HARNESS ETR CNT MDL ISBe6.7	BSIII
4933503	570115990111	HARNESS WIRING ISBe6.7	BSIII
4989419	570115990134	HARNESS ETR CNT MDL ISBe6.7 BUS	BSIV
4989419	570115990134	HARNESS ETR CNT MDL ISBe6.7 BUS	BSIV
5476342	278615990246	ECM WIRING HARNESS ISBe5.9 AND 6.7	BSIV
5475922	278615990232	VISCOUS FAN WIRING HARNESS	BSIV
5527749	573720993302	VISCOUS FAN WIRING HARNESS ISBe6.7L	BSVI

ELECTRONIC FUEL PUMP



PART NUMBER	OEM REFERENCE	DESCRIPTION	EMISSION
5293887	278607990155	BOSCH FUEL PUMP ISBe5.9L AJINKYA	BSIV
4359410	278607999868	CUMMINS FUEL PUMP ISBe5.9 UMBRELLA	BSIV
5264248	570107990102	BOSCH FUEL PUMP ISBe6.7	BSIII BSIV
5526165	570107990118	BOSCH FUEL PUMP ISBe6.7 ATULYA	BSIII BSIV
5491496	Not Available	CUMMINS FUEL PUMP ISBe5.6L ASHWAMEDHA	BSVI

ELECTRONIC INJECTOR



PART NUMBER	OEM REFERENCE	DESCRIPTION	EMISSION
5295060	278607990157	BOSCH INJECTOR ISBe5.9L AJINKYA	BSIV
4384786	278607999867	CUMMINS INJECTOR ISBe5.9L UMBRELLA	BSIV
4937065	570107999907	BOSCH INJECTOR ISBe6.7 PRIMA CRIN1.6	BSIII
5267035	570107999956	BOSCH INJECTOR ISBe6.7 PRIMA	BSIV
5521671	570101999803	BOSCH INJECTOR ISBe6.7L ATULYA	BSVI
5291991	278601990124	BOSCH INJECTOR 6BTA ISBe5.9L	BSIII
3283562	278607999840	BOSCH INJECTOR ISBe5.9L 6BTA	BSII
328356	NA	BOSCH INJECTOR (OFF HIGHWAY AND 4BT)	BSII

COMMON RAIL



PART NUMBER	OEM REFERENCE	DESCRIPTION	EMISSION
4384242	278607999871	CUMMINS COMMON RAIL ISBe5.9L UMBRELLA	BSIV
5524240	573707999803	CUMMINS COMMON RAIL ISBe5.6L ASHWAMEDHA	BBSVI
5727202	570107999810	CUMMINS COMMON RAIL ISBe6.7L ASHWAMEDHA	BSVI
5293891	278607990156	BOSCH COMMON RAIL ISBe5.9L AJINKYA	BSIII BSIV
3977530	570107990101	BOSCH COMMON RAIL ISBe6.7L PRIMA	BSIII BSIV
5521679	570107999804	BOSCH COMMON RAIL ISBe6.7L ATULYA	BSIV

STARTER MOTOR

PART NUMBER	OEM REFERENCE	DESCRIPTION	EMISSION
5286815	278615990118	STARTER MOTOR (Model – 8M14, 24V)	BSII BSIII
5302536	570115990128	STARTER MOTOR	BSIV
5302757	278615990192	STARTER MOTOR	BSIV
4093988	278615990107	STARTER MOTOR	BSII BSIII
4093941	278607989926	STARTER MOTOR	BSII
3935328	278615999904	STARTER MOTOR	BSIII

ELECTRONIC SENSORS

PART NUMBER	OEM REFERENCE	DESCRIPTION	EMISSION
5491744	573715999811	SENSOR,POSITION ISBe5.6L	BSIV BSVI
4383999	573715999804	SENSOR,POSITION ISBe5.6L/6.7L	BSVI
5491993		SENSOR,POSITION	BSIV
5526165	570107990118	PUMP FUEL INJECTION ISBe5.6	BSVI
4384138	278614999814	DIFFERENTIAL PRESSURE SENSOR ISBe5.9L UMBRELLA	BSIV
4928594	278614999815	PRESSURE SENSOR ISBe 5.9 UMBRELLA	BSIV
4921517	278614999974	PRESSURE SENSOR ISBe 6.7 PRIMA	BSIV
5266898	NA	PRESSURE SWITCH	COMMON
2897691	NA	PRESSURE SWITCH	COMMON
2872858	278614999818	TEMPERATURE SENSOR ISBe5.9L UMBRELLA ENGINE	BSIV
4954905	286315999916	TEMPERATURE SENSOR ISBe6.7L /5.9L	BSIV BSVI

ELECTRONIC SENSORS

PART NUMBER	OEM REFERENCE	DESCRIPTION	EMISSION
5365650	278615999845	Crank position sensor ISBe5.9L AJINKYA AND UMBRELLA	BSIV
4327230/ 5491326	570115999808	Crank speed ISBe 5.9 Umbrella	BSIV
5348867	278615990206	ELECTRONIC CONTROL MODULE ISBe 5.9 AJINKYA AND UMBRELLA (ECM)	COMMON
4995445	570115990124	ELECTRONIC CONTROL MODULEPRIMA (ECM)	BSIV
4354670	572715990116	ELECTRONIC CONTROL MODULE PRIMA (ECM)	BSVI
2897331	278615999835	RAIL PRESSURE SENSOR ISBe6.7L	BSIII BSIV
4384678	573715999802	PRESSURE SENSOR ISBe6.7L/5.6L	BS VI
2897333	286315999959	TEMPERATURE SENSOR ISBe5.9L /6.7L/5.6L	BSIII BSIV BSVI
5396543	278601999736	SENSOR ADAPTER	BSIV
2867958	NA	TEMPERATURE SENSOR	BSIV
5303683	278615993314	ECM MOUNTING BRACKET	BSIV

BASIC OVERHAUL KIT

KIT PART NUMBER	KIT DESCRIPTION	CHILD PART NUMBER	DESCRIPTION	QTY
3238404	BSIV(UMBRELLA SCR) BASIC OVERHAUL KIT	5476713	KIT,PISTON RING	1
		5476712	KIT,ENGINE PISTON	6
		5476716	KIT,UPPER ENGINE GASKET	1
		5476720	KIT,LOWER ENGINE GASKET	1
3238405	BSIV(AJINKYA) BASIC OVERHAUL KIT	5476713	KIT,PISTON RING	1
		5450948	KIT,ENGINE PISTON	6
		5336843	KIT,UPPER ENGINE GASKET	1
		5316503	KIT,LOWER ENGINE GASKET	1
3238408	BSII BASIC OVERHAUL KIT	4093678	KIT,PISTON 6BT	6
		3802421	SET,PISTON RING	1
		3936562	SET,UPPER ENGINE GASKET	1
		3936563	KIT,LOWER ENGINE GASKET	1
3238407	BSIII BASIC OVERHAUL KIT	5292547	SET,PISTON RING (STD)	1
		5292544	KIT,ENGINE PISTON (STD)	6
		5258736	SET,UPPER ENGINE GASKET	1
		5258737	SET,LOWER ENGINE GASKET	1

KIT- UPPER AND LOWER ENGINE GASKET

KIT PART NUMBER	KIT DESCRIPTION	CHILD PART NUMBER	DESCRIPTION	QTY/ KIT
3238431	BSIV(UMBRELLA SCR) GASKET KIT	5476716	KIT,UPPER ENGINE GASKET	1
		5476720	KIT,LOWER ENGINE GASKET	1
3238432	BSIV(AJINKYA) GASKET KIT	5336843	KIT,UPPER ENGINE GASKET	1
		5316503	KIT,LOWER ENGINE GASKET	1
3238433	BSII GASKET KIT	3936562	SET,UPPER ENGINE GASKET	1
		3936563	KIT,LOWER ENGINE GASKET	1
3238434	BSIII GASKET KIT	5258736	SET,UPPER ENGINE GASKET	1
		5258737	SET,LOWER ENGINE GASKET	1
5316500	Upper Gasket 5.9 BS3	278601990226	SET,UPPER ENGINE GASKET	1
5316503	Lower Gasket 5.9 Bs3	278601990227	SET,LOWER ENGINE GASKET	1

LONG BLOCK WITH FRONT SUMP OIL

CUMMINS PART NUMBER	PART DESCRIPTION	TCL SO NUMBER	ENGINE MODEL	SUMP DETAILS
AX1016667	LONG BLOCK FOR BSVI B6.7 WITH ENGINE BRAKE	SO21690	BSVI Atulya B6.7L WB300HP@2300	FRONT OIL SUMP
AX1016668	LONG BLOCK FOR BSVI B5.6L WITHOUT ENGINE BRAKE	SO21684	BSVI Ashvamedha B5.6L WOB 180HP@2300 RPM	FRONT OIL SUMP
AX1016669	LONG BLOCK FOR BSVI B5.6L WITHOUT ENGINE BRAKE	SO21685	BSVI Ashvamedha B5.6L WOB	FRONT OIL SUMP
AX1016670	LONG BLOCK FOR BSVI 5.6L WITH ENGINE BRAKE	SO21686	BSVI Ashvamedha 5.6L WB 220HP@2500 RPM	FRONT OIL SUMP

4BT ENGINE PARTS

PART NUMBER	OEM REFERENCE	DESCRIPTION
3929039	278605997904	CAMSHAFT 4BT 3.9L
3908031	NA	CRANK SHAFT ASSY 4BT 3.9 L (CRANK + GAIR + DOWEL PIN)
4093818	NA	CYLINDER BLOCK 4BT 3.9
3283562	278607999840	INJECTOR BS2 AND 4BT
3802375	NA	LOWER ENGINE GASKET 4BT 3.9L
3920400	278601998051	Oil Pan 4Bt Parts M 8 x 1.25 Length- 21mm
4963765	NA	SCREW,BANJO CONNECTOR 4Bt Parts
3926846	220001143714	SCREW,HEX FLANGE HEAD CAP 4Bt Parts M8 X 1.25 X 20.
3907769	286320998001	SCREW,HEXAGON HEAD CAP 4Bt Parts M10 X 1.75 X 70.
3991132	NA	SCREW,HEXAGON HEAD CAP 4Bt Parts M16 X 1.50 X 16
3934450	NA	SCREW,HEXAGON HEAD CAP 4Bt Parts M6 X 1.00 X 30
4053590	NA	SCREW,SOCKET HEAD CAP 4Bt Parts
3919448	278603999987	SCREW,SOCKET HEAD CAP 4Bt Parts M6 X 1.00 X 30.
4094055	278609998002	Tube, Inj Fuel supply screw banjo- Fuel Manifold 4Bt Parts M6 x 1.00 Length-14.3
4089648	NA	UPPER ENGINE GASKET 4BT 3.9L

TURBOCHARGER



PART NUMBER	OEM REFERENCE	DESCRIPTION	EMISSION
4031746	NA	KIT,REPAIR.TURBO.HX35W	BSVI
3795308	NA	KIT,REPAIR.TUR.HE250WG	BSVI
4031578	278614990202	KIT,REPAIR.MINOR.HX40	BSVI
5606722	NA	KIT,SERVICE..HE250EWG	BSVI
4030816	NA	CORE ASSEMBLY.HX35W	BSVI
3537817	278618999958	CORE ASSEMBLY.HX35	BSVI
4031734	NA	CORE ASSEMBLY.HX35W	BSVI
3539071	NA	CORE ASSEMBLY.HX25	BSVI
5352694	NA	CORE ASSEMBLY.HE250FG	BSVI
5603508	NA	CORE ASSEMBLY.HE250WG	BSVI
5603509	NA	CORE ASSEMBLY.HE250WG	BSVI
5603510	NA	CORE ASSEMBLY.HE250WG	BSVI
5603511	NA	CHRA	BSIV
5551604	NA	CORE ASSEMBLY.HE250WG	BSVI

TURBOCHARGER



PART NUMBER	OEM REFERENCE	DESCRIPTION	EMISSION
5606467	NA	CORE ASSEMBLY.HE300WG	BSVI
5609642	NA	CORE ASSEMBLY.HE250WG	BSVI
5554735	NA	CORE ASSEMBLY.HE200WG	BSVI

COMPONENTS PARTS



PART NUMBER	OEM REFERENCE	DESCRIPTION	EMISSION
A061M971	278614110101	TANK MOUNTED DOSER	BSIV
A050Y181	278614999801	ELEMENT, FILTER (ONLY FILTER)	BSIV
A040N388	278614119902	ELEMENT, FILTER (WITH DAMPER)	BSIV
A041G028	278614119917	FILTER, DIESEL EXHAUST FLUID	BSIV
A055G799	278614999805	FILTER, AIR CYLINDRICAL PRIMARY	BSIV
A057F856	278614119923	AUS 32 TANK CAP	BSIV
A043M250	278614119923	CAP, FILLER	BSIV
A041G028	278614119917	FILTER,DIESEL EXHAUST FLUID	BSIV
A057F166	500349100152	AUS 32 Tank LEVEL SENSOR-(HEADER DEF FLUID TANK)	BSIV
A049X671	500349100152	HEADER, DIESEL EXHAUST FLUID TANK	BSIV
A049Y112	NA	AUS 32 TANK LEVEL SENSOR-(HEADER DEF FLUID TANK)	BSIV

COMPONENTS PARTS



PART NUMBER	OEM REFERENCE	DESCRIPTION	EMISSION
A045S157	570114110107	OUTLET NOX SENSOR (GEN2.8)	BSIV
A046P415	570114119901	INLET TEMPERATURE SENSOR	BSIV
A042P552	NA	AIR SHUT OFF VALVE (TANK MOUNT)	BSIV
A043J591	278614119001	AIR VALVE,CONTROL (ASOC ASSEMBLY)	BSIV
A042P588	278614110103	INJECTOR NOZZLE	BSIV
CES10038 (Old Part - A052R283)	278614110107	EGP (WITH DECOMP) DEVICE, AFTERTREATMENT	BSIV
CES10039 (Old Part - A052V437)	278614110110	EGP (WITH DECOMP) DEVICE, AFTERTREATMENT	BSIV
A052V434	278614110126	EGP - DEVICE, AFTERTREATMENT	BSIV
A057U723	278614110198	EGP - DEVICE, AFTERTREATMENT	BSIV
A051L411	573714999858	FILTER,DIESEL EXHAUST FLUID-KIT	BSVI

COMPONENTS PARTS



PART NUMBER	OEM REFERENCE	DESCRIPTION	EMISSION
A059Z389	573714119921	INTANK FILTER	BSVI
A060H214	573714110160	MODULE, DOSER FLUID SUPPLY	BSVI
A061G329	573714110199	INJECTOR, DOSER	BSVI
A063J903	573714110207	HEADER, DIESEL EXHAUST TANK	BSVI
A062Y043	MB404120	RESERVOIR	BSVI
A063J902	507949200109	RESERVOIR	BSVI
A059K085	507949200138	CAP, FILLER	BSVI
A059K305	507949207709	RETAINER, GASKET	BSVI
A059K188	507949200137	FILTER, DIESEL EXHAUST FLUID	BSVI
A059K081	507949204203	PLUG, DRAIN	BSVI
A061J072	573714110184	MODULE, DPF CATALYST	BSVI
A061J694	573714110109	MODULE, DPF CATALYST	BSVI
A061J949	573714110175	MODULE, DPF CATALYST	BSVI

COMPONENTS PARTS



PART NUMBER	OEM REFERENCE	DESCRIPTION	EMISSION
A062T542	570114110166	MODULE,DPF CATALYST	BSVI
A062V181	570114110172	MODULE,DPF CATALYST	BSVI
A059F685	573714110168	MODULE, PRESSURE SENSING	BSVI
A059F691	573714110195	MODULE, PRESSURE SENSING	BSVI
A060A561	573714110145	MODULE, PRESSURE SENSING	BSVI
A060A562	573714110146	MODULE, PRESSURE SENSING	BSVI
A061Y426	573714110190	MODULE, PRESSURE SENSING	BSVI
A061Y427	573714110189	MODULE, PRESSURE SENSING	BSVI
A045H141	570114110177	SENSOR, NITROGEN OXIDE	BSVI
A045S171	XCA00800	SENSOR, NITROGEN OXIDE	BSVI
A062U283	570114110107	SENSOR, NITROGEN OXIDE	BSVI
A062U284	573714110127	SENSOR, NITROGEN OXIDE	BSVI

COMPONENTS PARTS



PART NUMBER	OEM REFERENCE	DESCRIPTION	EMISSION
A062U294	573714110148	SENSOR, NITROGEN OXIDE	BSVI
A063T161	573714110149	SENSOR, NITROGEN OXIDE	BSVI
A061B903	573714110124	SENSOR, NITROGEN OXIDE	BSVI



Genuine Cummins Cylinder Block

#BadhoBefikar



The cylinder block is the largest main structure of the diesel engine containing the engine cylinders. It is the backbone of the engine.



Features

- Carefully selected material composition - Grey Cast Iron
- Sand Blast surface treatment
- Bore honing (Cylindricity controlled within 15 microns)
- Optimised clearance between bore and piston ring
- Maximum bore distortion below 1 micron for accurate piston ring interference
- Quality casting with less porosity
- Reconditioning of critical features (like bore)



Advantages

- High 'wear and corrosion resistance' with superior fatigue strength at higher temperature
- Compatibility with piston ring
- Reduced friction
- Lower wear
- Reduced load on piston ring
- Better sealing leading to no leaks
- No intermixing of gases, oil and coolant
- Capability to withstand the pressure of 172+ bar
- Improved lifespan of block
- Block bore can be controlled within 10 microns



Benefits

- Higher durability with demonstrated life of 7 lakhs km
- Less than 0.04% of oil consumption
- Better reliability
- Improved engine durability
- Lower Total Cost of Ownership



Risks of Non-genuine Parts

- Bore failure due to low water jacket wall thickness



- Cracks due to poor casting material



- Poor casting material with high porosity leads to intermixing of oil, gases and coolant
- Higher unplanned downtime
- Higher maintenance cost due to incorrect bore tolerances leading to frequent piston ring changes



Why use Genuine Cummins Parts



Demonstrated life of more than 7 lakhs km or 7 years

Developed through Analysis Led Design

2500+ hours of cumulative testing done to ensure premium quality of Genuine Cummins Parts



Cummins India Limited

Cummins India Office Campus, Tower A, 3rd Floor,
Survey no. 21, Balewadi, Pune - 411045 (MH)

Toll free no.: 1-800-210-2525

Email ID: care.india@cummins.com



Genuine Cummins Cylinder Head

#BadhoBefikar



Cylinder head sits above the cylinders and forms the roof of the combustion chamber. It contains inlet and exhaust passages, coolant passages, valves, camshafts and fuel injectors.



Features

- Carefully selected material composition (molly / non-molly cast iron) based on application

- Accurate cylinder head design with optimised water jackets through Analysis Led Design

- Accurate surface finish and flatness during machining

- Robust Quality Control on features of casting



Advantages

- Capability to withstand high temperatures - 673K (400 °C)
- High fatigue strength of 172 bar

- Lowers head and valve temperature
- Avoids fault codes related to high temperature

- Secured sealing
- Avoids gas leakage during combustion
- Controls surface waviness

- No failures due to core shift, porosity



Benefits

- Improved durability
- Demonstrated life of more than 7 lakhs km

- Uninterrupted vehicle performance

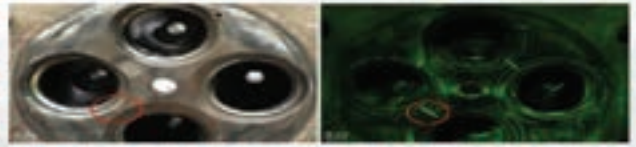
- Improved fuel efficiency

- Increased durability of Cylinder head and Valves

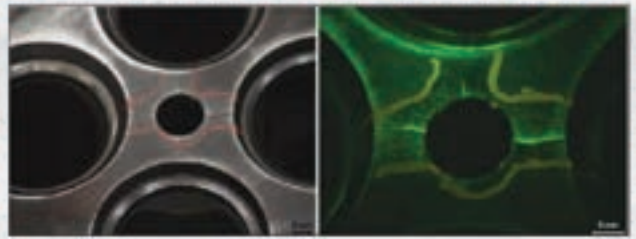


Risks of Non-genuine Parts

➤ Cylinder head combustion face crack



➤ Cracks between Injector bore and valves insufficient coolant flow



- Risk of valve scuffing leading to valve train failure (**Major Overhaul**)
- Performance impact (**lower power and torque**) and risk of valve failures
- Frequent service interval leading to more **unplanned downtime**



Why use Genuine Cummins Parts



Demonstrated life of more than 7 lakhs km

3500+ hours of cumulative testing done to ensure premium quality of Genuine Cummins parts

Developed through Analysis Led Design

Compatible with Cummins valve seat insert and valve train considering thermal and dynamic performance



Cummins India Limited

Cummins India Office Campus, Tower A, 3rd Floor,
Survey no. 21, Balewadi, Pune - 411045 (MH)

Toll free no.: 1-800-210-2525

Email ID: care.india@cummins.com



Genuine Cummins Valves

#BadhoBefikar



Valves seal the combustion gases during compression and power stroke, and allow intake gases into or exhaust gases out of the cylinder during intake and exhaust stroke.



Features

- Carefully selected material composition – High Alloy Steel for Valve Head and Low Alloy steel for Valve Stem
- Nitridised surface treatment



Advantages

- High Alloy Steel ensures
 - › Better fatigue strength at higher temperature up to 1073K (800 °C)
 - › Adequate Formability to undergo plastic deformation to a given shape without defect
- Low Alloy Steel provides higher Yield Strength and Creep Strength to withstand material deformation at elevated temperature



Benefits

- Increased life of more than 7 lakhs km

- Chrome plated stem (45 HRC) and Tip (52 HRC)

- Improved hardness of stem and tip
- Prevents corrosion
- Reduces coefficient of friction

- Minimises rusting
- Minimises Stem Scuffing during intake and exhaust cycles

- Optimised clearances maintained between valve and guide (Diametrically 40-70 microns)

- Lesser side load
- Reduces valve guide wear

- Prevent valves and engine failure due to valves getting stuck
- Avoids major overhaul

- Optimised valve seat design Face angles (Exhaust 45° and Intake 30°)

- Efficient sealing
- Precise valve centring
- Uniform heat dissipation

- Improved fuel efficiency
- Less valve heating avoiding thermal cracks



Risks of Non-genuine Parts

- ▶ Valve head failure due to Valve Bent due to improper clearance leading to valve getting stuck



- ▶ Valve burnt due to improper material selection and surface treatment



- Valve bent due to improper clearance leading to **major overhaul**
- Risk of **valve scuffing** leading to valve train failure leading to **unplanned downtime**
- Risk of **Valve cracks** (Thermal Effect) due to usage of low grade material



Why use Genuine Cummins Parts



Demonstrated life of more than 7 lakhs km

Optimised valve seat design - shape and face angle compatible with Cummins engines leading to better fuel efficiency, power and torque

3500+ hours of cumulative testing done to ensure premium quality of Genuine Cummins Parts



Cummins India Limited

Cummins India Office Campus, Tower A, 3rd Floor,
Survey no. 21, Balewadi, Pune - 411045 (MH)

Toll free no.: 1-800-210-2525

Email ID: care.india@cummins.com



Genuine Cummins Piston

#BadhoBefikar



Converts the energy generated by combustion into reciprocating motion while ensuring proper sealing of gas and oil.



Features

- Precisely machined profiles and clearances (in some cases as low as 20 microns)

- Closely maintained tolerances

- Accurate bowl geometry

- High strength alloy



Advantages

- Smooth working of piston to pin and liner sliding interfaces
- Reduced friction and rubbing
- Precise working clearances enable gas and oil sealing

- Optimised piston motion and gas flow across the piston

- Ensures complete combustion

- Parts are more durable and reliable
- Ability to withstand temperatures up to 643K (370 °C)



Benefits

- Long life up to 8 lakhs km with less wear
- Lower maintenance downtime
- Maximum power output with minimal losses

- Smooth, noise-free function
- Reduced oil consumption

- Full power delivery and long engine life
- High mileage

- Optimum performance over long life up to demonstrated 8 lakhs km
- Reduced breakdown



Risks of Non-genuine Parts

- Bowl rim cracking due to low strength material usage (thermal fatigue)



- Skirt scuffing due to improper skirt profiles



- Piston seizures leading to part replacements leading to **unplanned downtime**
- Low power and load capability
- Higher oil consumption
- Low power and load capability



Why use Genuine Cummins Parts



Demonstrated life of more than 8 lakhs km

3000+ hours of cumulative testing done to ensure premium quality of Genuine Cummins Parts

Rotating bending fatigue tests at temperature to 673K (400 °C)



Cummins India Limited

Cummins India Office Campus, Tower A, 3rd Floor,
Survey no. 21, Balewadi, Pune - 411045 (MH)

Toll free no.: 1-800-210-2525

Email ID: care.india@cummins.com






Genuine Cummins Piston Ring

#BadhoBefikar



Seals gas at liner and piston interfaces and scrapes oil towards crankcase.

 Features	 Advantages	 Benefits
<ul style="list-style-type: none"> • Precise control on running face profiles with asymmetric barrel drop 	<ul style="list-style-type: none"> • Proper sealing, reduced friction and wear • Effective oil scraping 	<ul style="list-style-type: none"> • Increased life of more than 7 lakhs km • Optimum power delivery • Lower maintenance • Reduced oil consumption < 250 ml/100 hr for Tipper • Increased oil drain intervals
<ul style="list-style-type: none"> • Closely maintained end-gaps • (For B6.7L: Top ring - 0.3-0.39 mm Mid ring - 1.4-1.6 mm Oil ring - 0.2-0.4 mm approx.) 	<ul style="list-style-type: none"> • Optimised gas flow through and around the rings 	<ul style="list-style-type: none"> • Optimum blow-by • Reduced oil consumption • Increased breather life
<ul style="list-style-type: none"> • Proprietary ring coatings (Diamond and/or chrome coating) 	<ul style="list-style-type: none"> • Reduced wear and friction 	<ul style="list-style-type: none"> • Consistent performance over a longer life • Reduced downtime
<ul style="list-style-type: none"> • Close control on ring tensions (e.g. for B6.7L: Top ring - 16.4-27.3N Mid ring - 16-26.7N Oil ring - 29.3-39.7N) 	<ul style="list-style-type: none"> • Stable ring motions 	<ul style="list-style-type: none"> • Durable and consistent in-cylinder performance



Risks of Non-genuine Parts

➤ Top land carbon packing



➤ Increase in blow-by



- Excessive smoke and **loss of power**
- Frequent oil top-ups leading to **higher oil consumption**
- **Breather failures**
- **Engine seizures**



Why use Genuine Cummins Parts



Increased life more than 7 lakhs km

Reduced oil consumption

Genuine Cummins Parts undergo critical quality control tests - Ring Fatigue Test, Thermal Abusive Test, End Gap Butting Test, Endurance Test



Cummins India Limited

Cummins India Office Campus, Tower A, 3rd Floor,
Survey no. 21, Balewadi, Pune - 411045 (MH)

Toll free no.: 1-800-210-2525

Email ID: care.india@cummins.com



Genuine Cummins Camshaft

#BadhoBefikar



- Transfers rotational motion of crankshaft into translational motion to actuate the engine valves.
- Enables precise opening and closing of valves.



Features

- Carefully designed and precisely machined camshaft intake and exhaust lobe profiles
- High hardness above 70 HRC maintained on surface profiles - cam lobe area and journals
- Right selection of material and geometry for the camshaft to withstand loads
- Accurately designed geometrical interfaces with the block, bearing and gear



Advantages

- Actuate valves timing precisely for engine to achieve optimum efficiency and the engine brakes to deliver required engine braking power
- Minimal wear leading to precise operation of the valves over the lifetime of the engine
- Designed to operate at a high RPM of 3750 and high load
- Optimum performance over the lifetime



Benefits

- Adequate power and torque at all engine operating conditions
- Demonstrated life of over 7 lakhs km
- Adequate strength of the component at all operating conditions
- Higher durability with consistent performance



Risks of Non-genuine Parts

- › Camshaft breakage due to geometry not as per specifications



- › Cam lobe wear due to lobe hardness not as per specification



- Faster cam lobe wear due to usage of low grade material which will lead to lesser valve opening and consequentially **poor pick up, low mileage and less power**
- **Loss of performance over time**
- **Unplanned engine overhaul**
- Early life **catastrophic engine failure** and may even damage the block



Why use Genuine Cummins Parts



Designed for functioning over entire engine life span

4000+ hours of cumulative testing done to ensure premium quality of Genuine Cummins parts

Developed using Analysis Led Design considering entire engine valvetrain system



Cummins India Limited

Cummins India Office Campus, Tower A, 3rd Floor,
Survey no. 21, Balewadi, Pune - 411045 (MH)

Toll free no.: 1-800-210-2525
Email ID: care.india@cummins.com



Genuine Cummins Connecting Rod

#BadhoBefikar



Transfers the combustion pressure from the piston pin to the crankshaft. It also provides bearing surfaces for the piston pin and crank pin, ensuring smooth operation and performance.



Features

- Optimised small-end bushing clearances with genuine material (Copper-lead-tin alloy layer)
- Controlled big-end clearances (Nominal clearance 77 microns approx.)
- Optimised con rod structure at I-section
- High strength bolts which can withstand 3200 RPM



Advantages

- Smooth function at pin joint
- Better durability due to reduced friction
- Reduced friction
- Capability to withstand high loading conditions
- High strength with low weight
- Improved shear strength of the bolt



Benefits

- Reduced small-end wear resulting in demonstrated life of more than 7 lakhs km
- Smooth bearing performance
- Improved life of bearing
- High durability even in harsh running conditions
- Better durability



Risks of Non-genuine Parts

- ▶ **Connecting rod fracture** at I-beam due to incorrect I-beam design



- ▶ **Engine seizure** due to connecting rod fractured due to low strength material usage



Why use Genuine Cummins Parts



Demonstrated life of more than 7 lakhs km

3000+ hours of cumulative testing done to ensure premium quality of Genuine Cummins Parts

Successfully passed critical tests such as Pin Joint Seizure Test and Thermal Abusive Test



Cummins India Limited

Cummins India Office Campus, Tower A, 3rd Floor,
Survey no. 21, Balewadi, Pune - 411045 (MH)

Toll free no.: 1-800-210-2525

Email ID: care.india@cummins.com



Genuine Cummins Crankshaft

#BadhoBefikar



Transforms the linear motion of the pistons into a rotational motion and transmits power to various parts of the engine system.



Features

- Optimised journal, web and fillet dimensions

- Carefully selected material composition
- Induced hardening surface treatment

- Optimised counterweights

- Re-grindable crank journal and interface location



Advantages

- Minimised bearing friction
- Lower bending/torsional stress

- High fatigue strength (7170 bar MPa bending fatigue, 1030 bar torsional fatigue)
- Handles worst-case loading like continuous rated load, overspeed, etc

- Improved main bearing performance and lower cylinder block bending
- Lower engine vibrations

- Reusability through reconditioning which delivers the same performance as new



Benefits

- Near infinite life
- Improved fuel economy

- High durability

- Improved engine life

- Reduced TCO (Total Cost of Ownership)



Risks of Non-genuine Parts

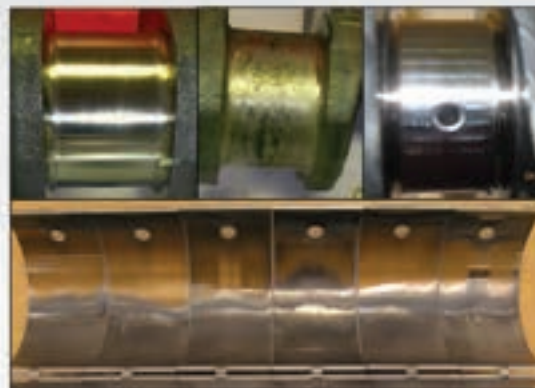
- Crank failure due to wrong material selection with insufficient strength to handle all loads



Bending fatigue failure

Torsional fatigue failure

- Bearing fatigue resulting from improper control over journals and non-optimised crank



- Non-genuine Crankshaft failures leads to major engine overhaul or even catastrophic engine failure



Why use Genuine Cummins Parts



Demonstrated life of 7 lakhs km, typically designed for near infinite life

2000+ hours of cumulative testing done to ensure premium quality of Genuine Cummins Parts



Cummins India Limited

Cummins India Office Campus, Tower A, 3rd Floor,
Survey no. 21, Balewadi, Pune - 411045 (MH)

Toll free no.: 1-800-210-2525

Email ID: care.india@cummins.com



Genuine Cummins Bearings

#BadhoBefikar



Plain journal bearing is meant to handle high load and metal-to-metal contact. Journal bearing helps in lubrication of running parts without interruption.



Features

- Precise design for 20 ~ 100 microns running clearance
- Best-in-class Embeddability to accommodate foreign particles in the lubricant
- High Conformability to absorb shaft deflections
- Accurate crush height design to ensure precise radial pressure (100-150 bar) and hoop stress (>2000 bar)
- Maintains Bearing Oil film thickness of 1 micron for Main bearing and 0.5 microns for con rod bearing



Advantages

- Clearance ensures longer fatigue resistance under varying load conditions
- Reduced friction
- Capability to withstand extreme load for long durations
- Load carrying capacity to sustain **200 bar** peak cylinder pressure
- Avoids journal wear
- Ensures proper interference of bearing in housing
- Uniform heat transfer at surface contacts
- Helps to bear load & reduce friction
- Avoids bearing failure due to excess heating



Benefits

- Improves fuel economy
- Ensures near **infinite life** of crankshaft
- Prevents bearing seizure leading to reduced unplanned engine downtime
- Reduces frequency of major engine overhaul
- Avoids slippage of bearing resulting in reduced wear and tear of bearing
- Improved life of bearing up to 7 lakhs km



Risks of Non-genuine Parts

- › Wear and tear due to inadequate gap between bearing and housing



- › Dynamic loading of plain bearings causes surface fatigue



- Insufficient clearance between bearing and shaft leads to break oil film and more wear of crankshaft
- Incorrect bearing crush height may result in improper contact pressure between bearing and housing resulting in **bearing seizure**
- Incorrect bearing compatibility with pairing parts like crankshaft, connecting rod resulting in **major parts failure**



Why use Genuine Cummins Parts



Demonstrated life of more than 7 lakhs km

Compatible with parts like crankshaft, connecting rod for Cummins engines

3500+ hours of cumulative testing done to ensure premium quality of Genuine Cummins parts

Bearing undergoes various tests on vehicle as proof of its reliability like Endurance Test, Thermal Abusive Test, Shot Box (Steady state with worst case temp loading) Test including high temperature, high load conditions, cold starting of engine test at 173K (-20 °C)



Cummins India Limited

Cummins India Office Campus, Tower A, 3rd Floor,
Survey no. 21, Balewadi, Pune - 411045 (MH)

Toll free no.: 1-800-210-2525

Email ID: care.india@cummins.com



Genuine Cummins Water Pump

#BadhoBefikar



Circulates coolant at the required flow rate through engine, accessories and radiator to keep engine and accessories temperature at optimum level.



Features



Advantages



Benefits

<ul style="list-style-type: none"> • Precisely moulded impeller with a metal sleeve • Precise clearances maintained with engine block volute 	<ul style="list-style-type: none"> • Optimum coolant flow maintained at varying engine speed and load conditions • Coolant temperature maintained below 372K (99 °C) 	<ul style="list-style-type: none"> • Up to 2% fuel saving due to less frequent fan-clutch engagement/disengagement • Required coolant flow maintained even on steep slopes
<ul style="list-style-type: none"> • Advanced composite material used for impeller 	<ul style="list-style-type: none"> • Lightweight • Avoids corrosion • Precise coolant flow 	<ul style="list-style-type: none"> • Consistent coolant pressure and flow over a period of 8+ years
<ul style="list-style-type: none"> • Rubber Gasket 	<ul style="list-style-type: none"> • Compatible with coolant • No coolant leakages 	<ul style="list-style-type: none"> • Life up to 8 years or more
<ul style="list-style-type: none"> • Validated ELC Seal 	<ul style="list-style-type: none"> • Designed to perform at all speeds (650-3000 RPM), loads (0%-100%) and temperature conditions (263K-325K/ -10 °C - 52 °C) • Withstands normal coolant deposits 	<ul style="list-style-type: none"> • High coolant pump life • No leakages
<ul style="list-style-type: none"> • Precisely machined drive pulley 	<ul style="list-style-type: none"> • No belt slippage • Correct water pump speed • Appropriate hub load up to 390 N max 	<ul style="list-style-type: none"> • Enhanced belt life up to 2000 hours



Risks of Non-genuine parts

- › Water pump seal failure due to corrosion



- › Coolant leakage from weep hole due to seal getting worn out



- Reduced coolant pressure and flow due to imperfect working clearances.
- Reduced coolant flow increases temperature leading to frequent fan clutch engagement/disengagement. This leads to higher fuel consumption.
- Higher lube oil consumption due to lube oil oxidation resulting from coolant overheating.
- Early life failure of water pump due to corrosion as a result of wrong impeller material selection
- Coolant leakage due to improper designed seals
- Reduced fan belt life



Why use Genuine Cummins Parts



Life of more than 8000 working hours

2000+ hours of cumulative testing done to ensure premium quality of Genuine Cummins Parts

67 critical tests and rigorous quality checks to ensure superior performance



Cummins India Limited

Cummins India Office Campus, Tower A, 3rd Floor,
Survey no. 21, Balewadi, Pune - 411045 (MH)

Toll free no.: 1-800-210-2525

Email ID: care.india@cummins.com



Genuine Cummins Lube Pump

#BadhoBefikar



Provides pressurised oil flow to the engine components ensuring proper lubrication of the components.



Features

- Precisely designed geometry for gears and rotors
- Optimised clearances and part tolerances
- Right selection of materials (wear resistant chrome steel) and proper manufacturing processes



Advantages

- Helps to achieve optimum oil flow rate based on engine speed and load conditions
- Ability to withstand higher loads during cold weather operations
- 93.5 LPM @ 2800 engine RPM at 373K (100 °C) and 14.5 LPM @ 500 RPM at 263K (-10 °C)
- Ensures optimum flow and limits wear for the engine in all operating conditions and temperatures
- Achieve acceptable noise level during engine operation
- Higher wear resistance against debris in oil



Benefits

- Adequate lubrication maintained at all load conditions and temperature
- Eliminates excess lube oil consumption
- Ensures smooth engine running
- Increased durability and reliability
- Demonstrated life of more than 7 lakhs km



Risks of Non-genuine parts

- Gear Seizure due to lack of lubrication



- Gear profile wear due to low quality material selection



- Oil starvation leading to **low life for the engine components** like gears, bearings, etc
- High wear and low durability
- High noise leading to customer irritation
- Higher unplanned downtime



Why use Genuine Cummins Parts



Demonstrated life more than 7 lakhs km

Developed using Analysis Led Design

5000+ hours of cumulative testing done to ensure premium quality of Genuine Cummins parts



Cummins India Limited

Cummins India Office Campus, Tower A, 3rd Floor,
Survey no. 21, Balewadi, Pune - 411045 (MH)

Toll free no.: 1-800-210-2525

Email ID: care.india@cummins.com



Genuine Cummins Turbocharger

#BadhoBefikar



Converts thermal energy from exhaust gas into mechanical energy to provide boost to engine by compressing fresh air and generating more power.



Features

- Nickel based Alloy turbo wheel and shaft
- Optimised profile and blade design of Turbo Core
- Superior design and high quality material of turbine housing
- Reliable and rigorously tested Sealing System
- Brass Alloy bearings with higher wear resistance



Advantages

- At 1 lakh+ running RPM, operates with lower wear and corrosion
- Capable to withstand 1073K (800 °C) temperature
- More air intake for combustion
- Increased air compression
- No turbine housing breakage and cracks
- Holds oil within bearing housing
- No bearing seizures



Benefits

- High durability with demonstrated life of more than 7 lakhs km
- Better fuel economy up to 8% leading to more mileage
- Enhanced power output of the engine at steep slopes and hilly areas leading to better performance and safer driving conditions
- Reduces downtime
- Housing design shields the flying turbine wheel during failure
- No oil leakage resulting in lesser oil consumption
- Lower cost of ownership
- High durability

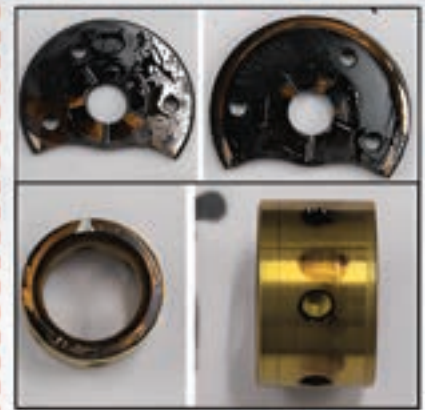


Risks of Non-genuine parts

- › Usage of low-temperature capable material leads to Impeller **profile bending** causing low fuel economy and less power output during demanding conditions like steep gradients.



- › **Bearing seizures** and wear due to low grade material may lead to catastrophic failure of turbocharger and need for frequent servicing, leading to more unplanned downtime.



Why use Genuine Cummins Parts



Improved fuel economy up to 8% more

Lesser emissions

Higher combustion efficiency

Greater durability and longevity up to 7 lakhs km

2000+ hours of cumulative testing done to ensure the premium quality of Genuine Cummins Parts



Cummins India Limited

Cummins India Office Campus, Tower A, 3rd Floor,
Survey no. 21, Balewadi, Pune - 411045 (MH)

Toll free no.: 1-800-210-2525

Email ID: care.india@cummins.com

Genuine Cummins DEF Supply Unit UL2.2

#BadhoBefikar



Supplies optimal DEF quantity in NOx conversion chamber of the Aftertreatment System.



Features



Advantages



Benefits

- A diaphragm-pump used for DEF supply
- Driven by a brushless DC Motor

- Accurate flow control with variable motor speed
- Lesser current consumption

- Optimal DEF consumption and minimises the risk of DEF crystallisation
- Energy savings

- Motor integrated with the control board

- Smaller space and lesser electrical complexity

- Compact packaging with reduced weight

- Common design for 12V and 24V

- Reduced proliferation

- Ease of integration. Same Supply Unit can be used for 12V and 24V batteries as per vehicle

- Electronic Pressure Relief Valve (EPRV)

- Better pressure control

- Consequential failure of Flapper Valve, DEF line and dosing unit is eliminated

- Inbuilt DEF freeze protection

- Protects the system from DEF freezing in cold weather

- Better usability of product in the freezing cold weather

- Flexible mounting options – on chassis, on the tank

- Packaging flexibility

- Lower part number proliferation leading to lower inventory carrying cost

- Serviceable filter, inlet screen

- Ease of service

- Lower cost of ownership

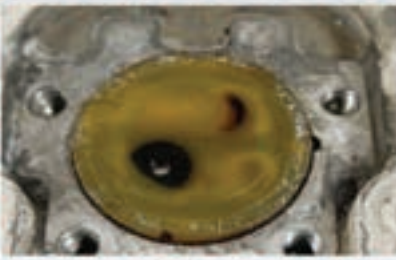


Risks of Non-genuine parts

- › DPF crystallisation due to usage of non-genuine DEF Supply unit



- › Early Flapper Valve damage



- Early life DEF dribbling issues in Supply Unit
- Frequent DPF cleaning required leading to higher cost of operation
- Increased unplanned downtime for vehicle



Why use Genuine Cummins Parts



Higher performance accuracy leading to better emission control

Lower total cost of ownership

Increased durability and longevity of DEF Supply Unit

More uptime for vehicle due to less DPF cleaning over a period of time

Critical performance tests such as ABA test, NTF test done to ensure premium quality of Genuine Cummins Parts



Cummins India Limited

Cummins India Office Campus, Tower A, 3rd Floor,
Survey no. 21, Balewadi, Pune - 411045 (MH)

Toll free no. : 1-800-210-2525

Email ID: care.india@cummins.com



Genuine Cummins Dosing Unit UL2.2

#BadhoBefikar



Supplies DEF for NOx conversion chamber of the Aftertreatment System. It helps in accurate spray of DEF.



Features

- Calibrated pressure sensor close to the injection point
- Proprietary nozzle design includes a unique pressure swirl atomizer
- Non-purged system
- Thermal management (nozzle cooling) using DEF recirculation



Advantages

- Better pressure stability
- Accurate and consistent dosing
- Precise DEF flow, angle and droplet sizes
- Reduced DEF crystal deposits on the mixer unit and DPF surface
- DEF does not come in contact with air
- Reduced risk of urea crystallisation and injector clogging
- No separate coolant, coolant lines, valves are needed



Benefits

- Emission within regulatory limits
- Lesser service events of the Mixer unit and DPF cleaning
- No extra battery power for DEF purging
- Increased life of DEF injector
- Lower Total Cost of Ownership
- Ease of maintenance



Risks of Non-genuine parts



- Nozzle clogging
- Frequent DEF crystallisation on mixer and DPF



- Early **Pressure Sensor damage**
- DEF dribbling
- Frequent DPF cleaning required leading to **higher Total Cost of Ownership**
- **Increased vehicle downtime**



Why use Genuine Cummins Parts



Higher performance accuracy leading to better emission control

Lower Total Cost of Ownership

Increased durability and longevity of DEF Dosing Unit

More uptime for Vehicle due to less DPF cleaning over a period of time

Critical Performance tests such as ABA test, NTF test done to ensure premium quality of Genuine Cummins Parts



Cummins India Limited

Cummins India Office Campus, Tower A, 3rd Floor,
Survey no. 21, Balewadi, Pune - 411045 (MH)

Toll free no.: 1-800-210-2525

Email ID: care.india@cummins.com



Genuine Cummins In-Tank DEF Filter (BSIV) #BadhoBefikar



Avoids debris from entering into the DEF system and enables proper functioning of overall Dosing system.



Features

- 2D mesh filter suitably designed for filtration of DEF ISO 22241 standard

- Bush and sealing (O ring) arrangement

- Withstand purging (air pressure) during vehicle stop and allows DEF to return in DEF tank from DEF lines

- Filter specialised fabric and plastic rib moulded as a single rigid structure

- Filter fabrics moulded with the casing for proper sealing
- Suction tube fitment with quick fit positive one-way locking using circlip



Advantages

- 98%+ filtration for particle size above 35 microns

- No contamination in DEF line

- Reduces DEF crystallisation in DEF lines
- Avoid filter damage during purging

- Withstands temperature -40 to 85 °C and capable to handle flow rate beyond 8 kg per hour
- No collapse/damage of filter fabric due to differential pressure across the filter
- Avoids DEF leakage

- Avoids ingress of contaminants into the dosing system
- Avoids leakage of DEF



Benefits

- Improved life of critical parts like metering unit and nozzle

- Improved life of main filter

- Reduced Total Cost of Ownership (TCO) by avoiding damage to critical parts and early failure of filters

- Improved life, retaining filtration performance for a longer period

- Increased service interval of Aftertreatment System (ATS)



Risks of Non-genuine Parts

➤ Metering unit blockage



➤ Nozzle and air check valve blockage



➤ Non-genuine filter fabric microscopic view



- Debris inside the DEF tank resulting in **damage to the Aftertreatment System** over a long run
- **Pump main filter early blockage** before planned service



Why use Genuine Cummins Parts



98% filtration efficiency for particle size above 35 microns as compared to 0% filtration for Non-genuine filters

Reduced unplanned downtime and Total Cost of Ownership

Protects expensive Aftertreatment System critical parts



Cummins India Limited

Cummins India Office Campus, Tower A, 3rd Floor,
Survey no. 21, Balewadi, Pune - 411045 (MH)

Toll free no.: 1-800-210-2525
Email ID: care.india@cummins.com



Genuine Cummins In-Tank DEF Filter (BSVI) #BadhoBefikar



Avoids debris from entering into the DEF system and enables proper functioning of overall dosing system.



Features

- 3D mesh filter as per SAE J1985 designed suitably for filtration of DEF ISO 22241 standards
- Bush and sealing (O ring) arrangement
- Filter specialised fabric and plastic rib moulded as single rigid structure
- Filter fabrics moulded with the casing to have proper sealing
- Suction tube fitment with quick fit positive one-way locking using circlip



Advantages

- 98%+ filtration for particle size above 40 microns
- Separates clean and dirty DEF
- No contamination in DEF line
- Withstands temperature -40 to 85 °C and capable to handle flow rate beyond 20 kg per hour
- No collapse/damage of filter fabric
- Avoids DEF leakage
- Avoids ingress of contaminants into the dosing system
- Avoids leakage of DEF



Benefits

- Improved life of critical parts like flapper valve and nozzle
- Improved life of main filter
- Improved life, retaining filtration performance for a longer period
- Increased service interval of Aftertreatment System (ATS)



Risks of Non-genuine Parts

- › Leads to main pump flapper valve damage



- › Leads to frequent nozzle clogging



- Debris inside the DEF tank resulting in **damage to the Aftertreatment System** over a long run
- Pump main filter **early blockage** before service interval



Why use Genuine Cummins Parts



98%+ filtration efficiency for particle size above 40 microns

Reduced unplanned downtime and Total Cost of Ownership

Protects expensive Aftertreatment System (ATS) parts like Supply Unit, Dosing Unit, etc.



Cummins India Limited

Cummins India Office Campus, Tower A, 3rd Floor,
Survey no. 21, Balewadi, Pune - 411045 (MH)

Toll free no.: 1-800-210-2525

Email ID: care.india@cummins.com



Genuine Cummins DEF Main Filter (BSVI)

#BadhoBefikar



A uniquely designed filter with 3D mesh inside it to avoid any debris from entering the Dosing system.



Features

- 3D mesh filter as per SAE J1985 designed suitably for filtration of DEF ISO 22241 standards
- Filter specialised fabric and plastic rib moulded as a single rigid structure
- O ring provides DEF sealing between unfiltered and filtered DEF



Advantages

- 98%+ filtration for particle size above 30 microns
- Withstand temperature -40 to 85 °C and capable to handle beyond 20 kg per hour flow rate
- No collapse/damage of filter fabric
- Efficient filtration for fibre particles
- Separates clean and dirty DEF
- No contamination in DEF line



Benefits

- Improved life of critical parts like flapper valve and nozzle
- Avoids SCR catalyst damage
- Avoids DEF leakage
- Improved life with longer filtration performance

Difference in the construction of Cummins Genuine and Non-genuine DEF filter

Genuine Cummins Filter	Non-genuine Filter
<ul style="list-style-type: none"> • Densely packed 3D mesh threads 	<ul style="list-style-type: none"> • Sparsely packed threads 
<ul style="list-style-type: none"> • More weight - 31.9 gm  <p>Supplier Laser marking: U 55/9</p> <p>Top Bottom</p> <p>31.9 g</p>	<ul style="list-style-type: none"> • Less weight - 25.7 gm  <p>No Supplier laser marking</p> <p>Top Bottom</p> <p>25.7 g</p>
<ul style="list-style-type: none"> • More surface area for filtration 	<ul style="list-style-type: none"> • Less surface area for filtration



Risks of Non-genuine Parts

- Supply Unit functional issues



- Dosing Unit early nozzle clogging
- Faster wear of DEF seals leading to leakage
- Return flow orifice blockage leading to Dosing Unit functional failure



- Non-genuine filters may result in short-term savings but **higher expenses in the long term**
- Leads to **increased unplanned down time** for the customer
- **Higher Total Cost of Ownership**



Why use Genuine Cummins Parts

- Filtration performance difference between genuine Cummins and non-genuine filters for different particle sizes in microns:

Particle size	Genuine Cummins Filter	Non-genuine Filter
>5 µm	27%	2.8%
>10 µm	75%	7.9%
>20 µm	99%	21.6%
>30 µm	100%	51.4%



- Superior filtration efficiency for the finest of particles
- Avoids Dosing Unit dribbling or leakage issues for longer durations
- DEF tank filter increases service intervals emission control components

Cummins India Limited

Cummins India Office Campus, Tower A, 3rd Floor,
Survey no. 21, Balewadi, Pune - 411045 (MH)

Toll free no.: 1-800-210-2525
Email ID: care.india@cummins.com



Genuine Cummins DEF Main Filter (BSIV)

#BadhoBefikar



A uniquely designed filter with 3D mesh inside it to avoid any debris from entering the Dosing system.



Features

- 3D mesh filter as per SAE J1985 designed suitably for filtration of DEF ISO 22241 standards

- Filter specialised fabric and plastic rib moulded as a single rigid structure

- O ring provides DEF sealing between unfiltered and filtered DEF



Advantages

- 98%+ filtration for particle size above 15 microns

- Withstand temperature -40 to 85 °C and capable to handle beyond 20 kg per hour flow rate
- No collapse/damage of filter fabric
- Efficient filtration for fibre particles

- Separates clean and dirty DEF
- No contamination in DEF line




Benefits

- Improved life of critical parts like metring unit, nozzle, dosing pump, injector and SCR catalyst

- Improved life with longer filtration performance
- Avoids DEF leakage

- Increases service interval of emission control components

Difference in the construction of Cummins Genuine and Non-genuine DEF filter

Genuine Cummins Filter	Non-genuine Filter
<ul style="list-style-type: none"> • Densely packed uniform mesh threads  <p>For 15 microns particle size, 98% filtration efficiency</p>	<ul style="list-style-type: none"> • Sparsely packed crushed threads  <p>Filtration efficiency: 0%</p>
<ul style="list-style-type: none"> • More weight - 32.5 gm  <p>View-1 View-2</p> <p>32.5 g</p>	<ul style="list-style-type: none"> • Less weight - 19 gm  <p>View-1 View-2</p> <p>19.0 g</p>
<ul style="list-style-type: none"> • More total surface area for filtration 	<ul style="list-style-type: none"> • Less surface area for filtration



Risks of Non-genuine Parts

- Metring unit blockage
- Pump functional issues



- Nozzle and Air check valve failures



- Non-genuine filters may result in short-term savings but **higher expenses in the long term**
- Leads to **increased unplanned downtime** for the customer
- **Higher Total Cost of Ownership**
- **This leads to emission performance failure in the field and DEF deposits in the SCR system**
- **Nozzle and Air check valve failures based on metre unit failure**



Why use Genuine Cummins Parts

- Filtration performance difference between genuine Cummins and non-genuine filters for different particle sizes in microns:

Particle size	Genuine Cummins Filter	Non-genuine Filter
>15 µm	98%	0%
>20 µm	>98%	15%
>30 µm	>98%	65%

- Superior filtration efficiency for the finest of particles
- DEF tank filter increases service intervals emission control components



Cummins India Limited

Cummins India Office Campus, Tower A, 3rd Floor,
Survey no. 21, Balewadi, Pune - 411045 (MH)

Toll free no.: 1-800-210-2525

Email ID: care.india@cummins.com



Genuine Cummins DPF Cleaning

#BadhoBefikar



To remove sintered ash and soot from the DPF and regain its efficiency to capture diesel particulates again.



Features

- 95%+ cleaning efficiency
- Easy exchange option of cleaned DPF at Cummins Component Care centres
- 8 hours of careful cleaning and drying cycle
- Patented cleaning technology
- 20+ years of global experience
- 13 Point Post cleaning electronic verification check
- Cummins certified dealer technician (CCC) support



Advantages

- More than 95% ash content inside DPF gets cleaned
- Zero wait time
- Deep and uniform cleaning of the entire interior of the DPF module
- Precious metal coating on DPF interior surface does not get washed out retaining emission filtration characteristics
- Lessons learned through several years of experience are incorporated in the machine and process design
- Thorough cleanliness verification before the DPF is handed over to the customer
- Customers can avail of CCC technician support PAN India for reinstallation and fault code reset.



Benefits

- Removes sintered ash
- Performance as good as new!
- Less vehicle downtime
- Cost saving due to reduced frequency of cleaning
- Pollution under regulatory limits thereby avoiding the penalty of emission limit violation
- Consistent cleaning results
- No repeat failure post installation of cleaned DPF
- Trouble-free post repair operation of the vehicle system



Risks of repair at unauthorized service centres

- Tests of 3 different competitive wet cleaning shows a drastic difference in how much more effective the Cummins DPF cleaning system is at removing hardened ash deposits.
- Loose Dry Ash removal – 100% removal at CCC compared to 20% removal at other centres
- Unable to completely remove sintered compact ash deposit
- Others service centres able to **remove only 50%** (0.05 to 0.95 kg) of ash (Note: The difference easily measured by weighing the DPFs before and after the cleaning process takes place)



- Emission non-compliance leads to **penalty by regulatory body**
- Accumulation of ash increases the engine back pressure and deteriorates engine performance
- **Frequent regeneration and higher fuel consumption** due to uncleaned sintered ash
- Increased cleaning frequency and **higher unplanned downtime**
- Superficial cleaning leads to hardened sintered ash deposit resulting in **permanent failure of DPF**



Why DPF cleaning at authorised Cummins Components Care Center (CCC)

Advantage of Cummins proven and patented 4-steps cleaning process

Calibrated cleaning technology avoids internal damage to the DPF

Long life and efficient performance equivalent to new one

Reduces frequent engine alarms and avoids expensive downtime



Cummins India Limited

Cummins India Office Campus, Tower A, 3rd Floor,
Survey no. 21, Balewadi, Pune - 411045 (MH)

Toll free no.: 1-800-210-2525
Email ID: care.india@cummins.com



CUMMINS ON-HIGHWAY AFTERMARKET PORTFOLIO

#BadhoBefikar



200+ Components
Care Centers
across India



Genuine
Cummins Parts



MITWA Mechanic
Loyalty Program



Vishwasji -
Your Trusted
Service Partner



BSVI
Training Vans

Cummins India Limited
Cummins India Office Campus,
Tower A, 3rd Floor, Survey No. 21,
Balewadi, Pune - 411045 (MH)

Toll Free No.: 1-800-210-2525
Email ID: care.india@cummins.com

