



HIGHWAY AFTERMARKET

PORTFOLIO

#BadhoBefikar

1962

Erstwhile Cummins Engine Company Inc. (CECO), USA and Kirloskar Oil Engines Limited (KOEL) established a joint venture with 50% ownership by CECO, 25.50% by KOEL and 24.50% floated on the Bombay Stock Exchange.



1967

Kirloskar Cummins acquired Cummins Diesel Sales and Service from Blackwood Hodge.



2002

Cummins India Ltd. acquired 48.54% shares in Cummins Generator Technologies India Pvt. Ltd. which was incorporated as 51:49 joint venture between Newage (now, Cummins Generator Technologies Ltd., UK) and Crompton Greaves.



Cummins India Ltd. sets up Cummins Power Generation.

2001

1968

A Shipment of 15 engines is dispatched to Egypt, heralding the beginning of export operations in India.

2007

Cummins Diesel Sales and Service India Ltd., wholly owned subsidiary of Cummins India Ltd. is renamed as Cummins Sales and Service India Ltd. (CSS).

Three plants open: Power Generation Plant at Pirangut, Cummins Generator Technologies Plant at Ranjangaon and KV Engine Plant at Kothrud.

Ground is broken for the Cummins Megasite at Phaltan.

2008



Cummins Megasite is inaugurated; High Horsepower Rebuild Centre and India Parts Distribution Centre become operational.

Cummins SVAM Sales and Service Ltd., a 50:50 joint venture dealership between Cummins India Ltd. and SVAM is incorporated.

2011

2018

Inauguration of Cummins Technical Centre in India set up by Cummins Group Company that also provides engineering and R&D services to Cummins India Ltd.



2014

Cummins India Office Campus, the first integrated ten acre office campus is inaugurated to accommodate office employees across all Cummins group entities in India.

Phaltan Midrange Upfit Center, the fifth project at the Cummins Megasite commences operations. New plant of the JV, Valvoline Cummins Ltd. is established in Ambarnath, Maharashtra. The low kilowatt genset plant for exports opens at the Special Economic Zone (SEZ) section of the Megasite.

2013

2019

'Cummins Inc. turns 100 Years' Celebration | Cummins India Ltd. is a subsidiary of Cummins Inc.

2021

Cummins Group in India conducted COVID-19 vaccination drives at all its plants and regional offices | **32000+** doses administered



2024



TATA Cummins Jamshedpur plant records remarkable 2 million engine production milestone

B SERIES ENGINE EVOLUTION

Technology Transformation



BS I / II

Before Year 2010
All Mechanical Engines
No Sensors
No Electronics



BS III

Year 2010
All Mechanical Engines
No Sensors
No Electronics
Tighter Emissions



BS VI

Year 2020
High pressure Electronics Fuel System
Telematics
Remote diagnostics and OBD
Enhanced After treatment - DOC, DPF, SCR, AMC
Advanced Electronic Controls & Sensors



BS IV

Year 2017
Electronics Fuel System
Electronic controls and sensors
After Treatment for Emissions

Cummins inaugurates a state-of-the-art manufacturing facility (TCPL GES) Jamshedpur in March 2024 to produce hydrogen-based internal combustion engines.

A Significant accomplishment in Cummins decarbonization journey

H2ICE initiative reaffirms its commitment to power a cleaner India



PRODUCT OFFERINGS IN ON HIGHWAY PORTFOLIO



Genuine Cummins Parts provides



Lower TCO



Top performance



Reliability



Longer life



High Durability



Turbo Charger



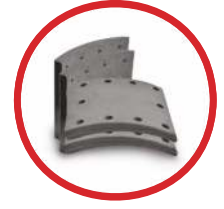
Filters



Engine Parts



Clutches



Brake Lining



Automotive Batteries



Coolants



O/H kit



UJ Cross



AIR Shield DEF

LONG BLOCK : SCOPE OF SUPPLY



Cylinder head inclusive of Valve cover

Valve cover

Cylinder head

Valves and Guides

Rocker arm Assly

Cylinder Block with Oil Sump

Piston, rings & Conn. rod

Crankshaft & Camshaft

Oil Pump

Oil Sump with Oil cooler Assly

Thermostat with Hsg

Water Pump

Timing Gear

Crankshaft Rear cover with Main Oil Seal

Note: CNG LONG BLOCK AND NEW ENGINE ALSO AVAILABLE

AIRSHIELD™ GENUINE CUMMINS DEF

For BSIV & BSVI equipped with SCR after treatment systems
The only one with diesel exhaust fluid partner of Eco-friendly SC engine

Be a BSIV & BSVI expert

- ▶ Professional knowledge
- ▶ Hands on training
- ▶ Specialized products
- ▶ Available in 20 Litres, 200 litres and 1000 Litres



FUEL SURE KIT

Experience the power of clean fuel



Cummins brings to you our groundbreaking innovation "Fuel Sure Kit* - to measure purity" of your fuel.

Designed for on-the-go service professionals, it addresses the environmental and eAsiency related challenges associated with adulterated diesel.

Our revolutionary kit empowers you to embrace a cleaner and more sustainable future while optimizing your diesel-powered equipment. Fuel Sure kit allows you to identify adulterated fuel right at the field, saving you valuable time and resources. Our pocket-sized kit contains pre-measured reagents in glass vials, ensuring safe and accurate testing.

With Fuel sure kit, be confident that every drop of your fuel that you use meets industry standards.



Option to buy in 2 SKUs

5-set Kit and 2-set Kit: can be used to test 5 diesel samples and 2 diesel samples respectively



Address Fuel Quality Challenges

Maintain reliable and efficient engine operation



User Friendly test mechanism

Allows you to identify adulteration" in diese quickly and accurately, right at the field



Shelf Life

Kit has a shelf life of 2 months, from date of manufacturing

Cummins fuel sure kit helps identify if sulphur content in Diesel is beyond permissible range of max 10 ppm sulphur.

FUEL DATUM PRODUCT RANGE



DATUM Z

1,000/2,000 Ltr.
For businesses using 8,000
litres (and above) of fuel monthly



DATUM Y

1,000/2,000 Ltr.
For businesses using
2,000-8,000 litres of fuel monthly

PRODUCT FEATURES



Live tracking of fuel levels



24/7 on-site fuel availability



Anti-theft authorized
dispensing only



Track & monitor fuel dispensed into
fleets and overall fuel consumption



Maximum savings with fuel
data insights



Fuel ordering through Repos
Mobile App from authorised
suppliers across India

APP BENEFITS



Order
Managements



Payment
Managements



Inventory
Managements



Vehicle fuelling
Managements

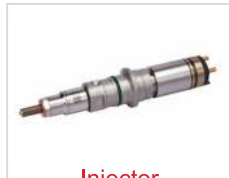
REPAIR AND RECON SOLUTION AT CCC

Repair and recon solutions are available at Cummins Components Care centres (CCC) spread across Pan India at 225+ locations.

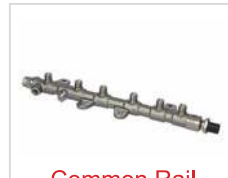
These CCC are supported by Cummins trained technicians, state-of-the-art infrastructure and genuine Cummins parts usage.



Fuel Pump



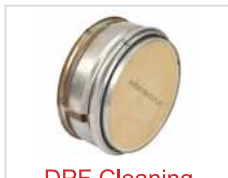
Injector



Common Rail



ETV



DPF Cleaning



Dozer BSVI



Dosing Unit BSVI



Supply Unit BSVI

Components Care Service Portfolio includes :



Sales of New and Recon Parts



Repair Services



Warranty Management

Our product scope includes components for Aftertreatment, Air Handling, Fuel Systems and Electronic Controls



Why Choose Cummins Components Care?

- Experts with advanced technical training
- Latest support technologies
- Unmatched network of aftermarket support
- Unparalleled service quality across the country
- A comprehensive solution for all component related services for BSIV and BSVI emission norms

More than Simple. It's Inclusive.



CUMMINS ON-HIGHWAY AFTERMARKET PORTFOLIO #BadhoBefikar



215+ CCC
Components
Care Centers across
India



Genuine
Cummins Parts



MITWA Mechanic
Loyalty Program



Vishwasji -
Your Trusted
Service Partner



BSVI
Training Vans

Cummins India Limited
Cummins India Office Campus,
Tower A, 3rd Floor, Survey No. 21,
Balewadi, Pune - 411045 (MH)

Toll Free No.: 1-800-210-2525
Email ID: care.india@cummins.com

