

NOTE:

PROPER VEHICLE FRAME DESIGN IN THE AREA OF SUSPENSION ATTACHMENT IS THE RESPONSIBILITY OF THE INSTALLER.

ALL WELDING TO COMPLY WITH AWS STANDARDS 70 KSI MIN. WELD WIRE TENSILE STRENGTH.

NO WELDING OR DRILLING ALLOWED ON TRAILING ARMS. NO WELD WITHIN .25" OF FRAME BRACKET TOOLING HOLES.

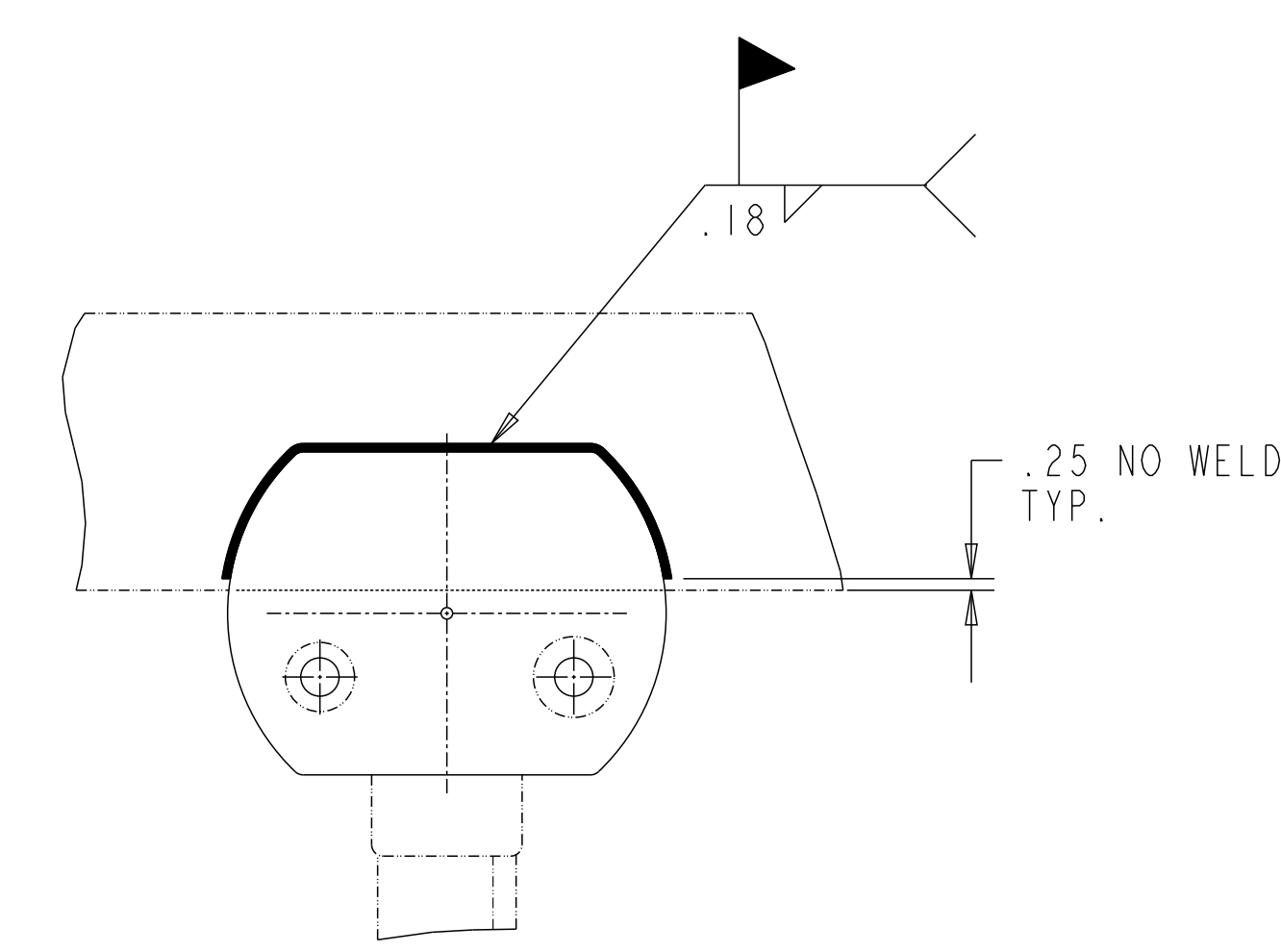
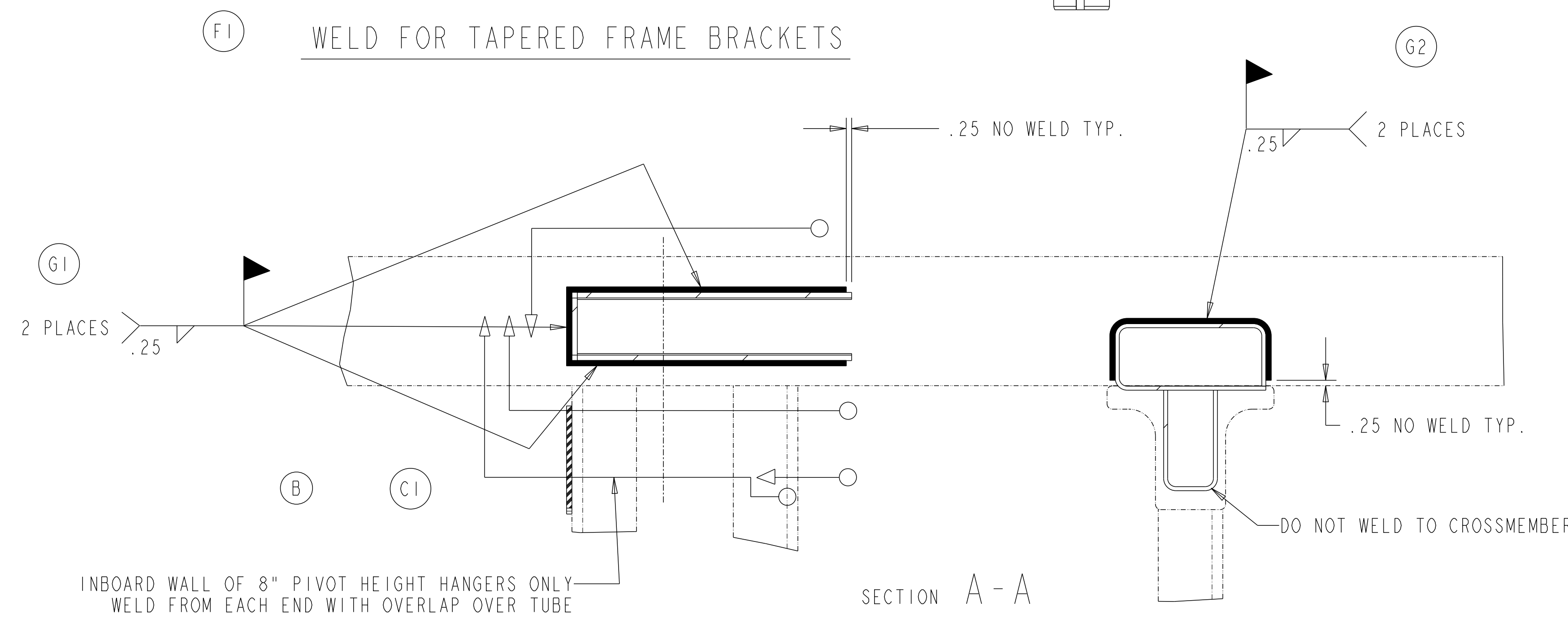
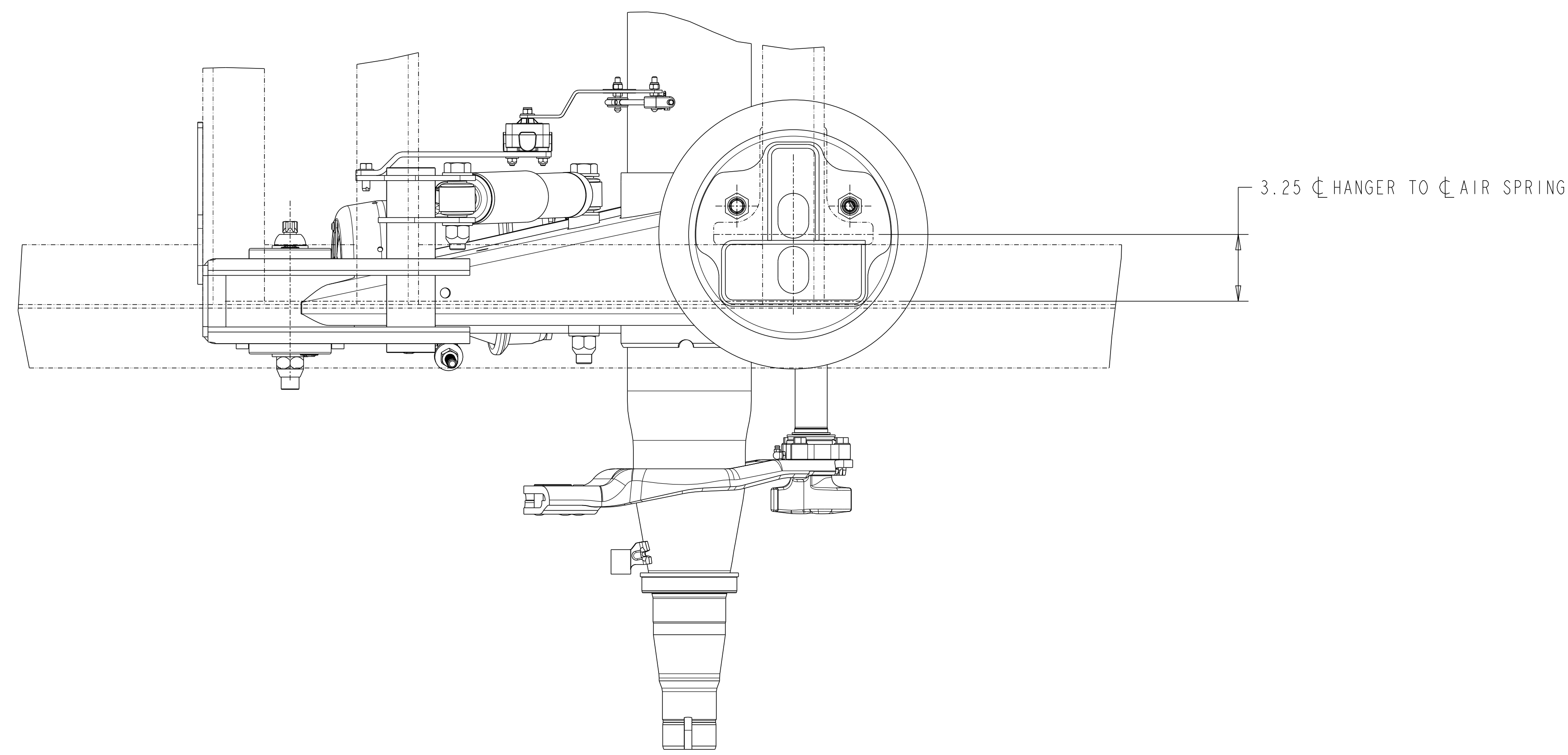
FOR GENERAL ARRANGEMENT INFORMATION SEE DRAWING:
5-70010A (DRUM BRAKE)
5-70010B (DISC BRAKE)

REFER TO SHOP CHART 4-60559_42 FOR TORQUE INFORMATION.

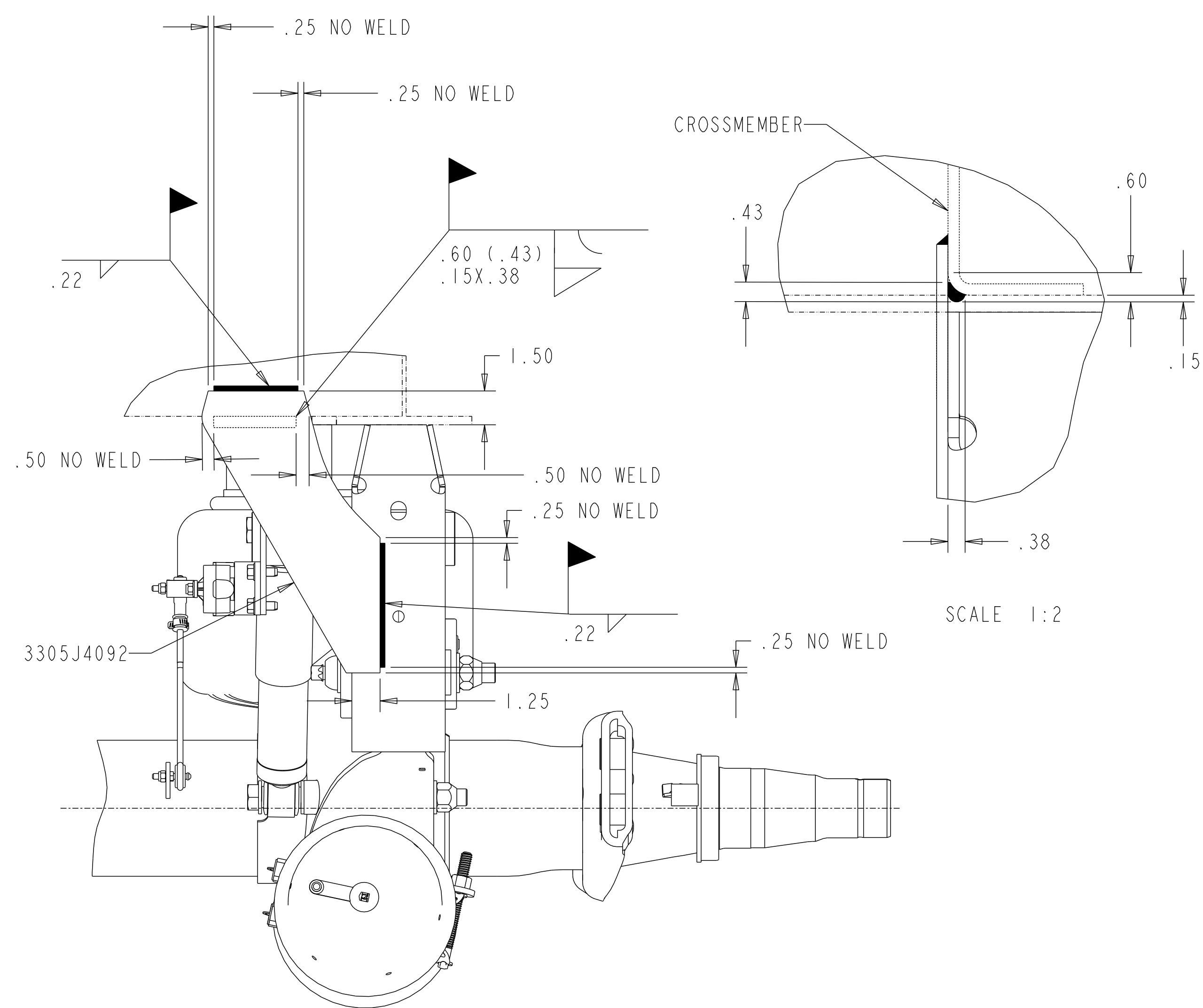
ALL INFORMATION SHOWN APPLIES TO BOTH DRUM AND DISC BRAKE APPLICATIONS (DRUM APPLICATION SHOWN)

WELD SEQUENCE

- START
- ▷ FINISH



14" RIDE HEIGHT
(PERFERED WELDING) C3 H



RECOMMENDED HANGER BRACING

(OPTIONAL RE-INFORCEMENT OPTIONS SHOWN ON SHEET 2)

RIDE HEIGHT	PH
13.5"	8.0"
14.0"	8.0"
15.0"	9.0"
16.0"	10.0"
17.0"	11.0"

C2

<p>APPLY SPECIFIED MERITOR MARKINGS PER DRAFTING ENGINEERING STANDARDS D-004</p>		<p>THIS PRINT IS LOANED ON A CONFIDENTIAL BASIS SUBJECT TO RETURN UPON DEMAND BY MERITOR AND NOTHING HEREON MAY BE REPRODUCED, USED OR DISCLOSED IN WHOLE OR IN PART WITHOUT THE PRIOR WRITTEN PERMISSION OF MERITOR.</p>		<p>MATERIAL: ...</p>		<p>PROCESS: ...</p>		<p>C.H. 7-15-15</p>		<p>SAIEG 8-28-15</p>		<p>3RD ANGLE PROJECTION</p>		<p>DRAWING SIZE: E</p>		<p>SCALE: 1:4</p>		<p>DESIGN CONTROL GROUP: TRAILER PRODUCTS NA</p>		<p>PART NO.: 5-70009A-01</p>		<p>EDC: 00050</p>	
<p>APPROVED: SAIEG</p>		<p>DRAWN BY: C.HOLT</p>		<p>CHECKED BY: SAIEG</p>		<p>APPROVED: SAIEG</p>		<p>APPROVED: SAIEG</p>		<p>APPROVED: SAIEG</p>		<p>APPROVED: SAIEG</p>		<p>APPROVED: SAIEG</p>		<p>APPROVED: SAIEG</p>		<p>APPROVED: SAIEG</p>		<p>APPROVED: SAIEG</p>			
<p>C.H. 7-15-15</p>		<p>SAIEG 8-28-15</p>		<p>SAIEG 8-28-15</p>		<p>SAIEG 8-28-15</p>		<p>SAIEG 8-28-15</p>		<p>SAIEG 8-28-15</p>		<p>SAIEG 8-28-15</p>		<p>SAIEG 8-28-15</p>		<p>SAIEG 8-28-15</p>		<p>SAIEG 8-28-15</p>		<p>SAIEG 8-28-15</p>			
<p>128762</p>		<p>MTA-Tec6-23T</p>		<p>MTA-Tec6-23T</p>		<p>MTA-Tec6-23T</p>		<p>MTA-Tec6-23T</p>		<p>MTA-Tec6-23T</p>		<p>MTA-Tec6-23T</p>		<p>MTA-Tec6-23T</p>		<p>MTA-Tec6-23T</p>		<p>MTA-Tec6-23T</p>		<p>MTA-Tec6-23T</p>			

SIM. PARTS		REVISIONS	
A	RELEASE 5-70009A FOR PRODUCTION	ECN-130875 4/25/16	CH SS
B	ADDED WELD SEQUENCE FOR 8" PIVOT HEIGHT HANGERS	ECN-132718 05/04/16	CH SS
C	ALL VIEWS UPDATED TO LATEST COMPONENTS. 1)REVISED WELD SEQUENCE, 2)REVISED TABLE, 3)ADDED VIEW	ECN-133727 13-DEC-17	CH VL
D	UPDATED VIEWS TO LATEST TRAILING ARMS AND PIVOT BOLT	ECN-155887 29-APR-19	CH SS
E	ADDED RE-INFORCEMENT OPTIONS ON SHEET 2 1)ADDED RIDE HEIGHT DIMENSION	ECN-164598 11-DEC-19	CH DL
F	1)ADDED NOTE (SHEET 1) 2)ADDED WELD DETAIL (SHEET 2)	ECN-166271 03-FEB-20	CH DL
G	1 & 2)ADDED 2 PLACES	ECN-169453 24-JUN-20	CH SS
H	1)REVISED WELDING, PLATE WAS WELDED TO CROSS MEMBER	ECN-202106 23-AUG-23	CH AN

CAD FILES	
NAME	TYPE
5-70009A H.4	DRAWING
5-70009A H.1	MODEL

DO NOT CHANGE MANUALLY

Revision: H.4
STATE: Design
EXPORT_CONTROL: HARD_WARE=EAR - EAR99,EXPORT_CONTROL=EAR - EAR99

